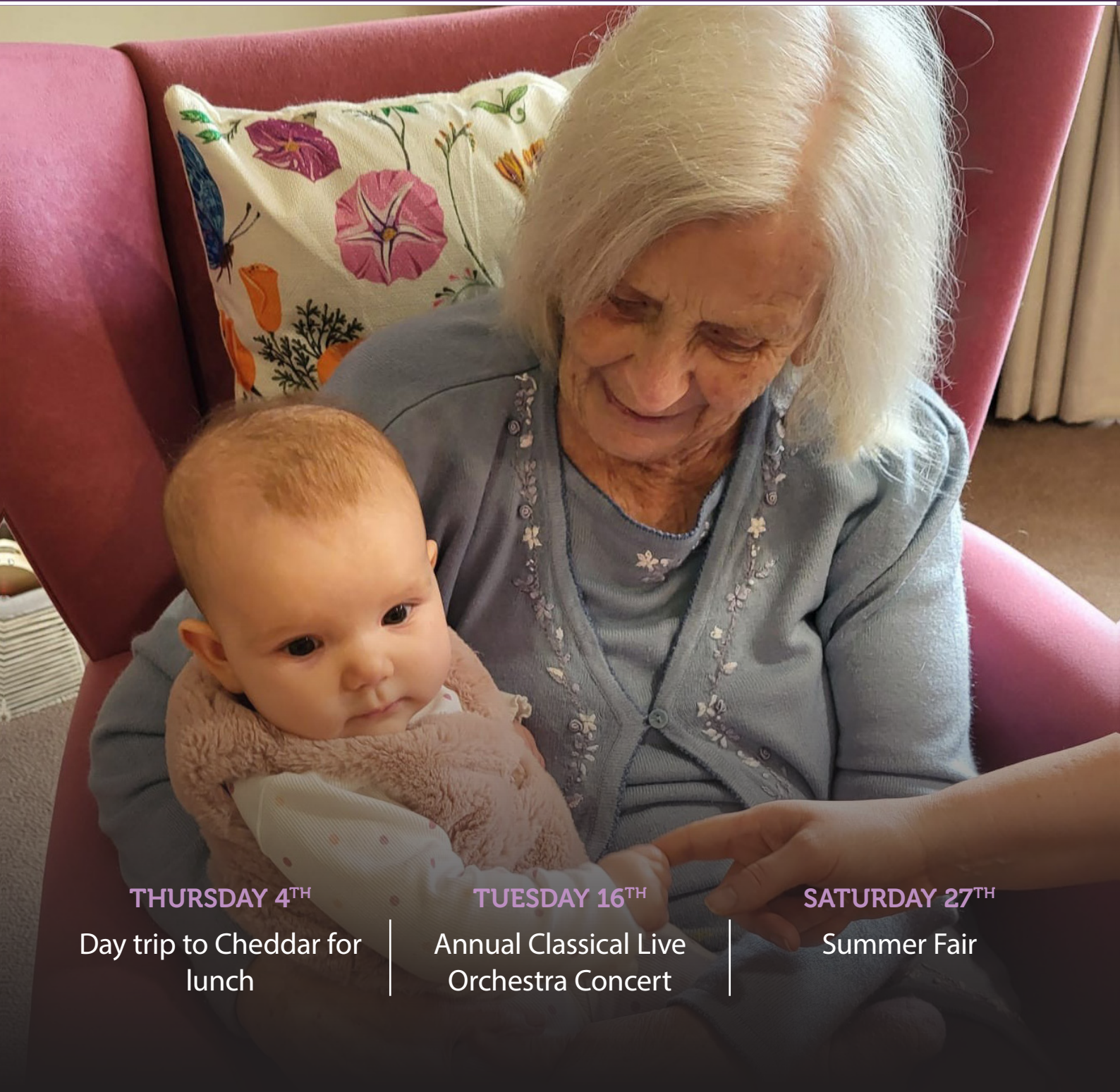


Activities CALENDAR



Quarry House

bristolcarehomes.co.uk



THURSDAY 4TH

Day trip to Cheddar for
lunch

TUESDAY 16TH

Annual Classical Live
Orchestra Concert

SATURDAY 27TH

Summer Fair



Hello,

dear friends!

We welcome you to our June edition.

Our June Summer Calendar, is filled with fun, vibrant and exciting events, activities within the home, and enjoyable day trips.

If you are new to the home, we would like to extend a very warm welcome. We hope you will settle in happily and feel truly at home with us.

Our activities are not only about keeping busy, but also about supporting overall wellbeing. The more our care team learns about each resident—their interests, hobbies and daily preferences—the more personalised and meaningful our activities can become. We always welcome ideas and support from family members to help us create enriching experiences for everyone.

A special highlight this month is the Annual Care Concert at Bristol Beacon on Tuesday 16th June. This wonderful event brings residents, families and friends together to celebrate life through music.

We are delighted that the Aurora Orchestra will be performing Mozart's Jupiter Symphony. Aurora is a unique orchestra that performs from memory rather than using sheet music, allowing musicians to move freely among the audience and create a truly immersive and memorable experience. They are also widely recognised for their performances at the annual BBC Proms.

We also look forward to welcoming you to the Quarry House Summer Fayre on Saturday 27th June, from 1:30pm to 4:00pm—a fantastic opportunity to come together, enjoy the summer atmosphere and create special memories. We hope this month's events bring you happiness, joy and many wonderful moments.

We wish you a fantastic time.



Meet the team

Amelia - Admin Assistant

Hello !!!

I started my journey by completing an NVQ Level 2 in Administration at college, after which I worked in various offices around Bristol. I then spent eight years working as a legal secretary before taking a break to raise my three boys. Once they were a bit older, I returned to work as a Placement Officer at a fostering agency, and for the past eight years I've been proud to be part of the team here at Quarry House.

I've always wanted to give something back to society, and I get a real sense of satisfaction from helping people and making their lives a little easier. Every day is different, but my role mainly involves supporting residents' families and visitors, making sure they feel welcome and comfortable. I also assist the care units, management team, and head office finance team with administration, and I enjoy putting together our newsletter.

Getting to know our residents, chatting with families, and working closely with colleagues is so important to me. Creating those connections and seeing people feel at home here is really special.

Outside of work, I have a bit of a fun side—I'm a huge Harry Potter fan! I also love animals and have two rabbits at home, and I'm part of a choir, which I really enjoy.

The most rewarding part of my role is seeing our residents living life to the fullest. When they smile, it truly makes my day. Knowing that I can play even a small part in ensuring they feel cared for and supported means everything to me.

I also feel very lucky and fortunate to work for Bristol Care Homes. They genuinely care about their staff, invest in people, and are great at recognising the hard work we all do.

MONDAY 1ST

9:00/11:00am

Wellness weekly
engagement/Variety
sessions with Louisa

All floors/Rooms



TUESDAY 2ND

10:30am

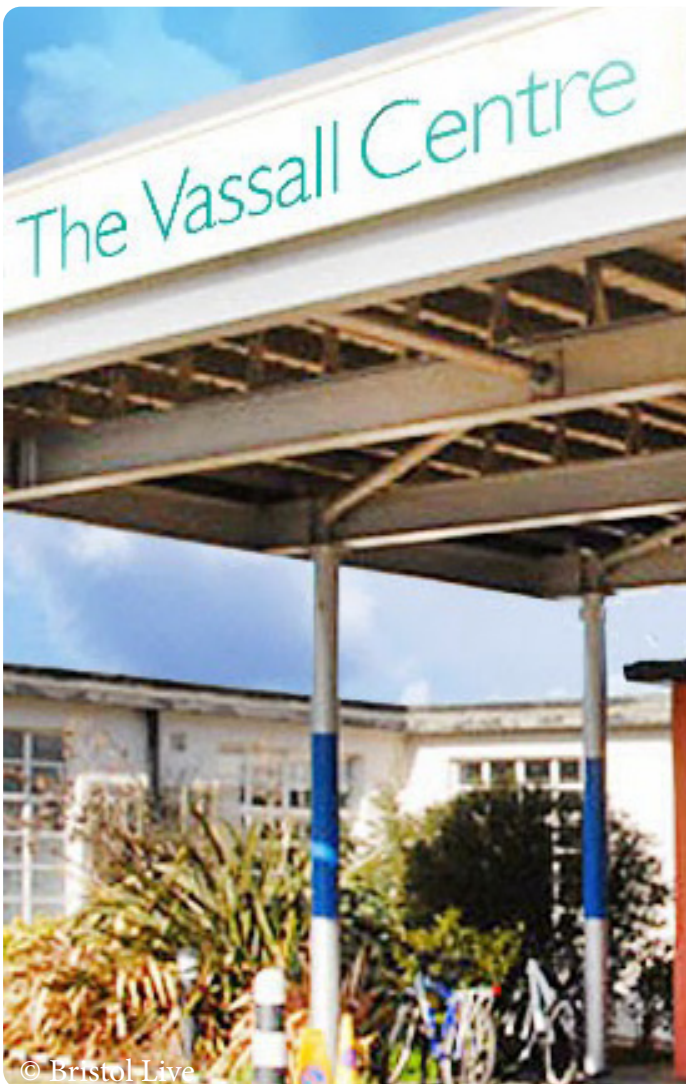
Summer Holiday
reminiscence

All floors

1:45/2:15/6:00pm

Day trip to The Vassals
Centre for lunch club/
Silent Disco/Facetime
calls

Vassals/Main lounge/All floors



© Bristol Live



WEDNESDAY 3RD

9:00/11:00am

Social engagement/The
History of bicycle with
virtual ride

Room/Main lounge

1:45pm

Choir & Prayer

Main lounge



THURSDAY 4TH

10:30/10:45am

History of Cheese on
interactive table/Day trip
to Cheddar for lunch

2:15pm

Entertainment with
singing duo Spangles

Main lounge



© Tripadvisor

FRIDAY 5TH

9:00/11:00am

Social engagement/Visit
from The Bristol MET
school

All floors/Main lounge

2:15pm

Time lapse -
environment changes

Main lounge



SATURDAY 6TH

10:30am

Residents' surveys

Rooms

2:15pm

Carry on Film Afternoon

Main lounge



MONDAY 8TH

9:00/11:00am

Wellness weekly
engagement/Residents
meeting over coffee

2:15pm

Entertainment with
guitarist Johnny Smyth
Main lounge



TUESDAY 9TH

09:30/11:00am

Visit to St. Joseph's
Sports Day/Holistic
massage therapy with
Tracey/G-fitness
Speedwell/Rooms/Garden

1:45/2:15/6:00pm

Short trip to Page Park/
Interactive Table -
exercises/Facetime calls
Staple Hill/Meadow lounge/
Rooms



WEDNESDAY 10TH

9:00/11:00am

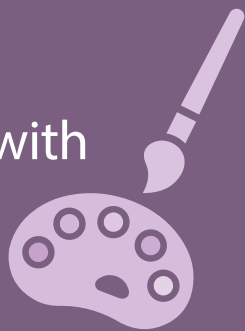
Social engagement/Art workshop with artist Amy

Rooms/Garden lounge

2:15pm

Entertainment with singer Shannon

Main lounge



THURSDAY 11TH

10:30am

Day trip to Bristol Zoo Project/Mocktail trolley

Cribbs Causeway/Garden & Meadow lounge

2:15pm

Mocktail trolley

Ocean/Sky lounge



© Tripadvisor

FRIDAY 12TH

9:00/11:00am

Social engagement/
Visit from The Bristol
MET school

Rooms/All floors

2:15pm

Shopping Games
Meadow lounge



SATURDAY 13TH

10:30am

Residents' surveys

Rooms

2:15pm

Sing-along fun

Main lounge



MONDAY 15TH

9:00/11:00am

Wellness weekly
engagement/Music on
Interactive Table
Rooms/Ocean lounge

2:15pm

Entertainment with
Ballroom Dancers 
Main lounge 



TUESDAY 16TH

10:30/11:00am

Oomph on Demand - All
things Fudge
All floors

12:00/4:00/6:00pm

Annual Classical Live
Orchestra Concert/
Fudge Tasting/Facetime
calls
Bristol Beacon/All floors/Rooms



WEDNESDAY 17TH

9:00/11:00am

Social engagement/
Sensory session

Rooms

2:15pm

Walking pals

All floors



THURSDAY 18TH

10:30am

Picnic reminiscence
Main lounge

2:15pm

Sandwich making/Short
trip for picnic to Ashton
Court Park

Main lounge/Ashton Court



© Tripadvisor



FRIDAY 19TH

9:00/11:00am

Social engagement/Visit
from The Bristol MET
school

2:15pm

Entertainment with singer
Rebecca

Main lounge



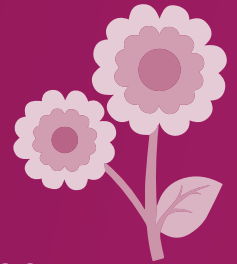
SATURDAY 20TH

10:30am

Gardening club
Garden lounge

2:15pm

Giant Dominoes
Sky lounge



MONDAY 22ND

9:00/11:00am

Wellness weekly
engagement/Interactive
Table Quiz

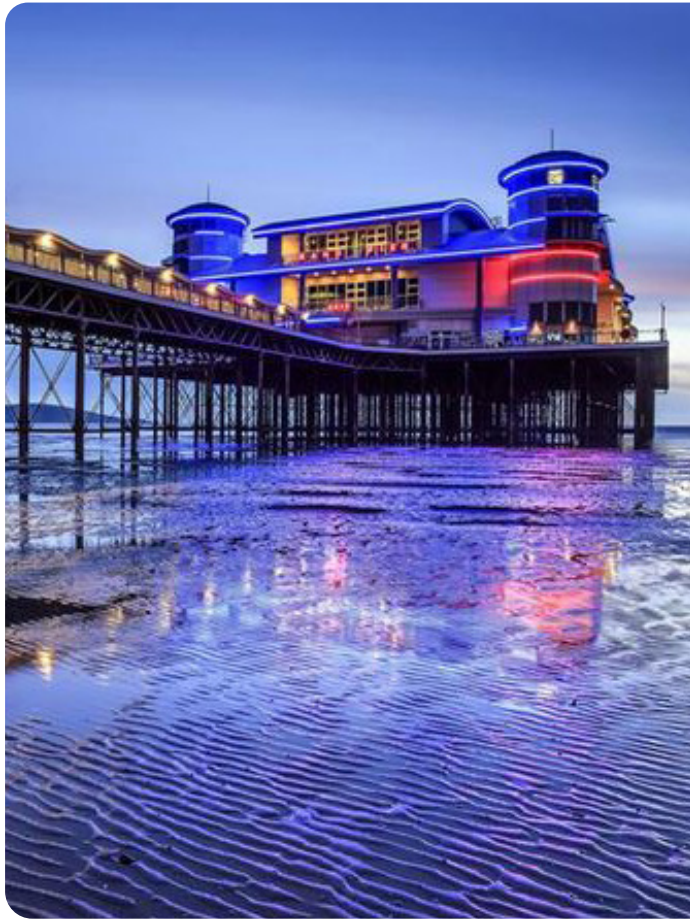
Rooms/Sky lounge

2:15pm

Entertainment with
singers - It Takes 2

Main lounge





TUESDAY 23RD

10:30/11:00am

Holistic massage therapy
with Tracey/Day trip to
Weston-super-Mare with
Glebe House

2:15/4:00/6:00pm

Entertainment with
violinist Lawrence/Short
trip to Pub/Facetime calls
Main Lounge/Fishponds/Rooms



WEDNESDAY 24TH

9:00/11:00am

Social engagement/
Puzzles & games
Rooms/All floors

2:15pm

Singing for the Brain
Main lounge





© Tripadvisor

THURSDAY 25TH

10:30am

Short trip to Hillside Court Cafe/Residents' surveys

2:15pm

Short trip to St. Georges Park/Entertainment with guitarist Damien

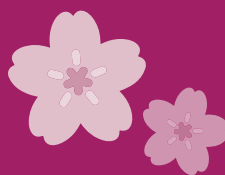
FRIDAY 26TH

9:00/11:00am

Social engagement/
Lullaby Circle - Mother and baby group

2:15pm

Summer Fair preparation
Garden





SATURDAY 27TH

10:30am

Summer Fair Set Up
Garden

13:30pm

Summer Fair
Garden



MONDAY 29TH

9:00/11:00am

Wellness weekly
engagement/Fine dining
experience

2:15pm

Entertainment with
musician Mike Nash
Main lounge



TUESDAY 30TH

10:30/11:00am

Short trip to Local Cafe/
Sports & games

Fishponds/All floors

1:45/2:15/6:00pm

Short trip to Local
shops/Entertainment
with singer Rebecca/
Fish & chips supper/
Facetime call

Fishponds/Rooms/Garden/
Rooms



Activity suggestion slip



If you have any ideas for new activities we could offer, please write them below and post the slip in the suggestions box.
