

Activities CALENDAR



Glebe House

bristolcarehomes.co.uk



TUESDAY 5TH

Day trip to M-Shed

TUESDAY 12TH

Entertainment with
musician Dave
Busker

FRIDAY 22ND

Lullaby Circle -
Mother and baby
group



Hello,
dear friend!

Welcome to our May edition!

This month is filled with summer-inspired activities designed to bring warmth and joy to each of our residents.

With many thoughtful suggestions from residents, family members, and friends, we're delighted to present a varied and engaging calendar. This month also includes opportunities to recognise and reflect on special occasions. On 8th May, we mark VE Day, honouring and remembering the 81st anniversary of the end of World War II in Europe. On the same day, we also celebrate the remarkable Sir David Attenborough, who turns 100—an incredible milestone. Are you a fan of his work? His documentaries continue to inspire and educate audiences around the world.

We also take time to celebrate International Nurses Day, recognising and thanking nurses for the compassion and care they provide every day.

For sports fans, May is an exciting month. Highlights include the Rugby Union Champions Cup Final on 23rd May, the UEFA Champions League Final on 30th May, and the thrill of the Grand Prix races taking place throughout the month. Our staff are always happy to help ensure you can follow your favourite sporting events or television programmes.

There has been great enthusiasm for our walking clubs across the homes. With the warmer months ahead, there are plenty of opportunities to enjoy the outdoors. Whether walking independently or using a wheelchair, spending time outside can bring a sense of calm and the added benefit of some much-needed vitamin D.

We wish you a lovely month ahead!



Meet the team

Bev - Activities carer

Hello!

I originally come from the North East of England and moved down to Thornbury when I was 11 – which, at the time, felt like quite a big and rather scary change! I went on to attend Castle School, where I studied until the age of 16 before going to college to train in childcare.

While studying, I took on a part-time job in the kitchen at Glebe House. What was meant to be just a temporary role quickly became something much more meaningful, and that's where my real love for Glebe House began. As time went on, I realised that childcare wasn't quite where my heart was – instead, I found myself drawn to caring for older people and supporting them day to day. At 19, I joined the care team at Glebe House, and I've never looked back.

Over the years, I've worked as a carer, a minibus carer, and now as an Activities Co-ordinator. This year marks my 26th year at Glebe House, which feels incredibly special.

What I love most about my current role is the time I get to spend with residents and their families. Being able to create moments of happiness, laughter, and connection – and simply seeing residents smile – is so rewarding. It means the world to me when residents recognise me, greet me warmly, or say, "Oh, I missed you."

Outside of work, I love crocheting and anything crafty, and I really enjoy spending time with my family and friends. Some of my favourite memories at Glebe House are the bonfire nights, where residents would watch from the garden or their windows while enjoying hot dogs and warm soup – those shared moments truly stayed with me.

For me, the most rewarding part of my job is getting to know residents' life stories and building meaningful relationships. Every day brings something new, and I feel very lucky to be part of Glebe House.

FRIDAY 1ST

11:00am

Coffee morning

Main lounge

2:30pm

Movie afternoon

Main lounge



SATURDAY 2ND

11:00am

Memory lane

Rooms

2:30pm

Making coconut ice

Dining room



SUNDAY 3RD

11:00am

Out and about with Residents

Almondsbury

2:30pm

Church service with Hannah

Main lounge



MONDAY 4TH

11:00am

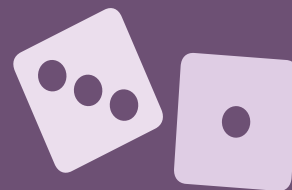
Walking club

Almondsbury community shop

2:30pm

Snakes and ladders

Main lounge



TUESDAY 5TH

11:00am

**Day trip to M-Shed/
Arts and crafts**

Bristol/Activities room

2:30pm

**Entertainment with
guitarist Daimen**

Main lounge



WEDNESDAY 6TH

11:00am

**Day trip to The Swan
Inn/Hair and nails**

Thornbury/Salon

2:30pm

**Day trip to
Almondsbury Garden
Centre/G-Fitness with
Alex**

Almondsbury/Main lounge



THURSDAY 7TH

11:00am

Coffee at the Bowl Inn

Almondsbury Village

2:30pm

Entertainment with violinist Lauren

Main lounge



FRIDAY 8TH

11:00am

VE Day Celebrations over coffee

Main lounge

2:30pm

Party Celebration - David Attenborough 100th birthday

Main lounge



SATURDAY 9TH

11:00am

Sensory session

Tulip lounge

2:30pm

Fun & Games over afternoon tea

Main lounge



SUNDAY 10TH

11:00am

Hand pampering/ Church service live- stream

Orchard lounge/Main lounge

2:30pm

Crafts and creativity

Activities room



MONDAY 11TH

11:00am

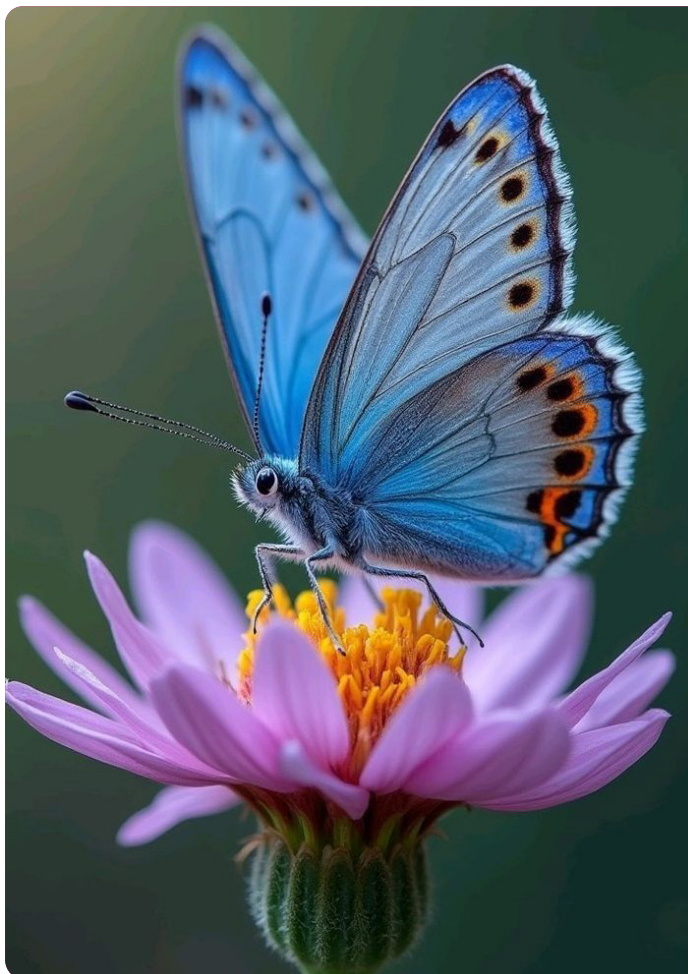
Day trip to Butterfly Zoo/Walking club

Wye Valley/Almondsbury

2:30pm

Quiz with Bev

Main lounge



TUESDAY 12TH

11:00am

Day trip to Alpaca Cafe/Nurses Day Celebration

Alveston/Main lounge

2:30pm

Entertainment with musician Dave Busker

Main lounge



WEDNESDAY 13TH

11:00am

**Day trip to The Wave/
Art workshop with artist Amy**

Easter Compton/Activities room

2:30pm

Singing for the Brain

Main lounge



THURSDAY 14TH

11:00am

Coffee at the Bowl Inn

Almondsbury

2:30pm

Entertainment with guitarist Johnny

Main lounge



FRIDAY 15TH

11:00am

Coffee morning

Main lounge

2:30pm

Movie afternoon

Main lounge



SATURDAY 16TH

11:00am

Social engagement with hand massage

Rooms

2:30pm

Fun in the garden

Garden



SUNDAY 17TH

11:00am

Exercise session

Orchard lounge

2:30pm

Church service with Jon

Main lounge



MONDAY 18TH

11:00am

Walking club and coffee

Almondsbury community
shop

2:30pm

Entertainment with Lauren from Flourish Dance Company

Main lounge



TUESDAY 19TH

11:00am

Day trip to Chew Valley Lakes with Quarry House/Bingo fun

Chew Valley/Activities Room

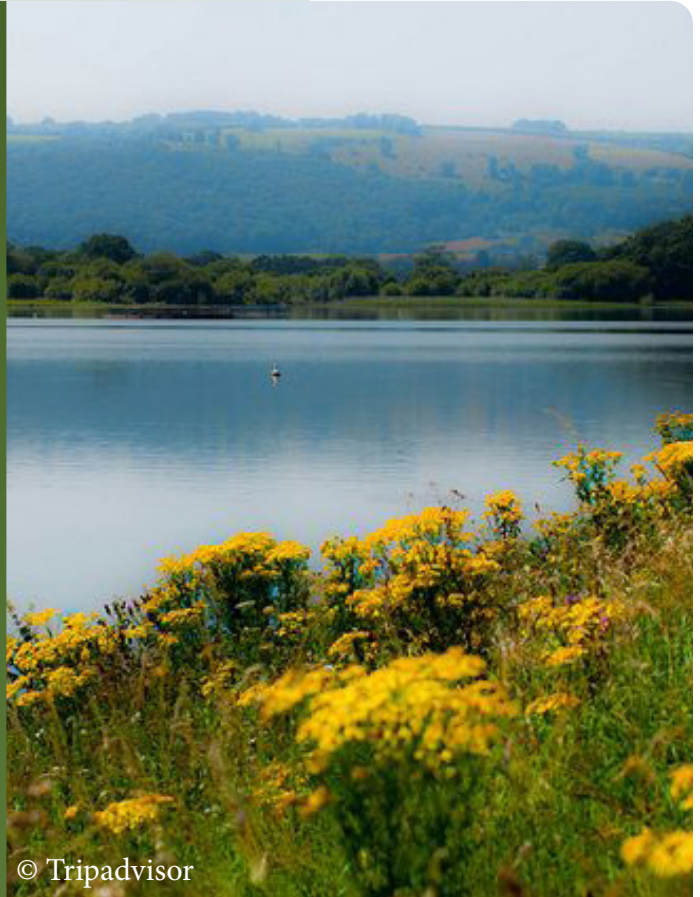
2:30pm

Pizza making

Dining room



© Tripadvisor



WEDNESDAY 20TH

11:00am

Day trip to Almondsbury Garden Centre/Hair and nails

Almondsbury/Salon

2:30pm

Day trip to West Country Water Park/Entertainment with North Avon Singers

Bradley Stoke/Main Lounge



© Bristol Live

THURSDAY 21ST

11:00am

Martial arts with Physio Zion

Main Lounge

2:00pm

Beer making in the garden - The Hoppiness Project with Alive

Dining room

FRIDAY 22ND

11:00am

Lullaby Circle - Mother and baby group

Main Lounge

2:30pm

Movie afternoon

Main Lounge



SATURDAY 23RD

11:00am

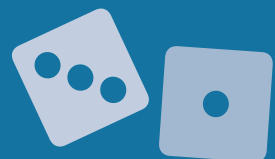
Musical favourites

Rooms

2:30pm

Snakes and ladders

Main lounge



SUNDAY 24TH

11:00am

Church service live-stream

Main lounge

2:30pm

Out and about with residents

Almondsbury



MONDAY 25TH

11:00am

Walking club and coffee

Almondsbury community shop

2:30pm

Play your cords right

Garden



© Tripadvisor

TUESDAY 26TH

11:00am

Day trip to Westonbirt Arboretum/Social engagements

Gloucestershire/Rooms

2:30pm

Memory lane with magician Steve

Main lounge



© Bristol Live

WEDNESDAY 27TH

11:00am

Day trip to Bourton-on-the-water/Hair and nails

Cotswolds/Salon

2:30pm

Thinking music with Phil

Main lounge



THURSDAY 28TH

11:00am

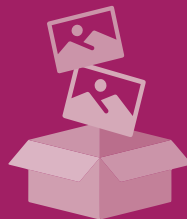
Coffee at the Bowl Inn

Almondsbury

2:30pm

My World in Pictures with Claire

Main lounge



FRIDAY 29TH

11:00am

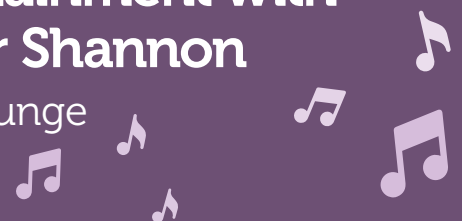
Coffee morning

Main lounge

2:30pm

Entertainment with singer Shannon

Main lounge



SATURDAY 30TH

11:00am

Manicure session

Tulip lounge

2:30pm

Making Cherry muffins

Dining room



SUNDAY 31ST

11:00am

Social engagement

Orchard lounge

2:30pm

Church service with Lynn and Peter

Main lounge



Activity suggestion slip

If you have any ideas for **new activities** we could offer, please write them below and post the slip in the suggestions