

Activities CALENDAR



Beech House

bristolcarehomes.co.uk



FRIDAY 1ST


Day trip to Bristol
Aquarium

THURSDAY 7TH

VE Day supper with
The Beavers

THURSDAY 28TH

Day trip to Wye
Valley Butterfly Farm



Hello, dear friend!

Welcome to our May edition!

This month is filled with summer-inspired activities designed to bring warmth and joy to each of our residents.

With many thoughtful suggestions from residents, family members, and friends, we're delighted to present a varied and engaging calendar. This month also includes opportunities to recognise and reflect on special occasions. On 8th May, we mark VE Day, honouring and remembering the 81st anniversary of the end of World War II in Europe. On the same day, we also celebrate the remarkable Sir David Attenborough, who turns 100—an incredible milestone. Are you a fan of his work? His documentaries continue to inspire and educate audiences around the world.

We also take time to celebrate International Nurses Day, recognising and thanking nurses for the compassion and care they provide every day.

For sports fans, May is an exciting month. Highlights include the Rugby Union Champions Cup Final on 23rd May, the UEFA Champions League Final on 30th May, and the thrill of the Grand Prix races taking place throughout the month. Our staff are always happy to help ensure you can follow your favourite sporting events or television programmes.

There has been great enthusiasm for our walking clubs across the homes. With the warmer months ahead, there are plenty of opportunities to enjoy the outdoors. Whether walking independently or using a wheelchair, spending time outside can bring a sense of calm and the added benefit of some much-needed vitamin D.

We wish you a lovely month ahead!



Meet the team

Becky - Administrator

Hello !

I have been part of Bristol Care Homes for four years, and it has truly been a rewarding chapter in my career. Before joining the team, I spent 19 years working as a personal secretary, after which I took time away from work to raise my two daughters. I have always lived close to Thornbury, and with both my daughters now at university, the time felt right to return to a role that felt meaningful.

While exploring new opportunities, I visited one of the residents at Beech House and immediately felt a genuine sense of warmth and purpose within the home. I knew this was a place where I could make a real difference in others life.

In my role, I do various duties from answering calls to preparing documents, supporting staff, and welcoming residents & families.

I take pride in making sure everyone feels supported. And of course, one of my most important daily duties is looking after Billy, our much loved home cat!

I genuinely enjoy the culture here. Everyone is incredibly kind, supportive, and committed to providing exceptional care. Accuracy, organisation, and following processes meticulously matter deeply to me, because I believe these are the foundations that help our home truly shine.

Outside of work, I enjoy going to the gym, gardening, and long walks. Bristol Care Homes is a wonderfully supportive organisation, and our Home Management team is always approachable, positive, and dedicated to creating a happy working environment.

FRIDAY 1ST

10:15/10:30/11:30am

Walking club/
Day trip to Bristol
Aquarium/Morning
exercise

Local area/Bristol/
Conservatory

2:30pm

Entertainment with
singer Rebecca
Conservatory



© Tripadvisor

SATURDAY 2ND

11:30am

Coffee morning &
Today in History
Conservatory

2:30/6:00pm

Singalong with Zoe/
Movie night
Conservatory/Front lounge

SUNDAY 3RD

11:00am

**Songs of Praise &
coffee**

Front lounge

2:30pm

Social engagements

Rooms



MONDAY 4TH

10:15/11:30am

**Walking club/
Morning exercise**

Local area/Conservatory

2:30pm

Word games

Conservatory



TUESDAY 5TH

11:00am

**Coffee morning &
Today in History**
Conservatory

2:30pm

**Entertainment with
musician Andy T**
Conservatory



WEDNESDAY 6TH

9:30/11:30am

**Shop & chat with Jay/
Fun fitness**
Around the home/
Conservatory

12:30/2:30pm

**Conservatory picnic/
Thornbury Musical
Theatre Group**
Conservatory

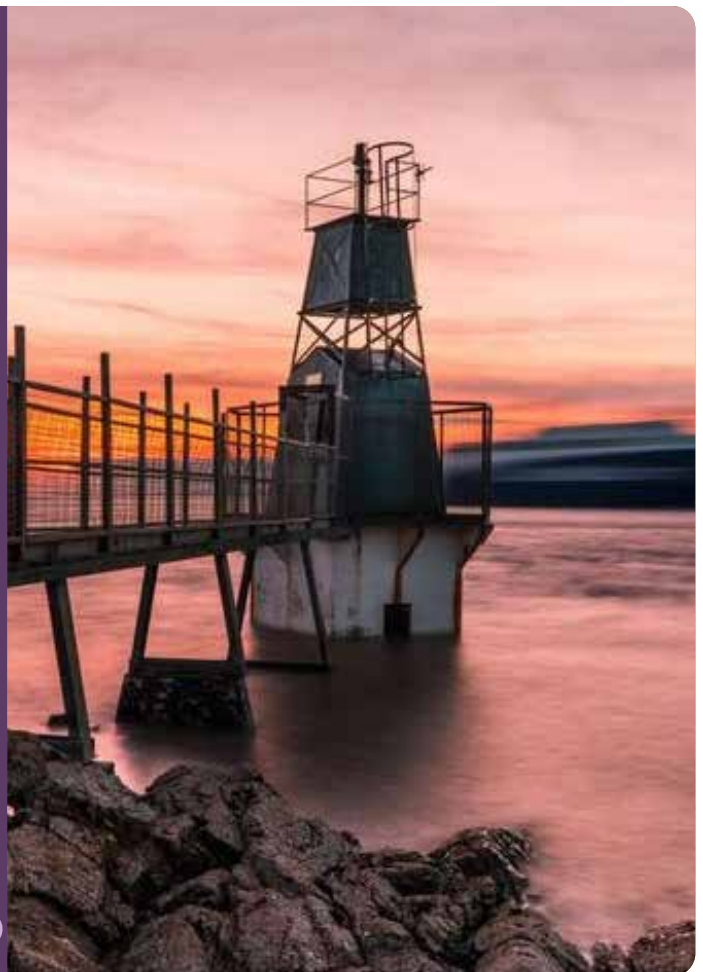
THURSDAY 7TH

10:30/11:00am

**Day trip to
Portishead/Coffee
morning**
Portishead/Conservatory

4:30pm

**VE Day supper with
The Beavers**
Conservatory/Front lounge





FRIDAY 8TH

10:15/10:30/11:30am
Walking club/Day
trip to Avon Valley
Railway/Morning
stretch

Local area/Bristol/
Conservatory

2:30pm
VE Day quiz with facts
& music
Front lounge

SATURDAY 9TH

11:00am

Coffee morning &
Today in History

Conservatory

2:30/6:00pm

Entertainment from
Mini Concerts/Movie
night

Conservatory/Front lounge

SUNDAY 10TH

11:00am

Church service &
coffee

Front lounge

2:30pm

Word games
Conservatory



MONDAY 11TH

10:15/11:30am

Walking club/Fun fitness

Local area/Conservatory

2:30pm

Giant snakes & ladders

Front lounge



TUESDAY 12TH

11:00am

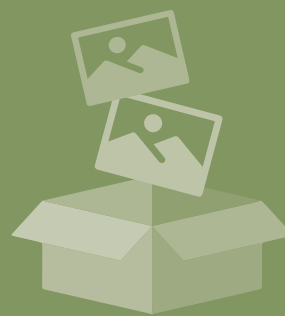
Florence Nightingale quiz & facts over coffee

Conservatory

2:30pm

Our World in Pictures with Claire

Front lounge



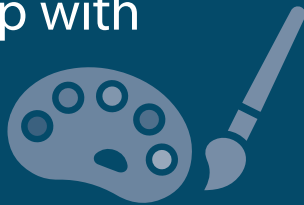
WEDNESDAY 13TH

11:00am

Juice bar
Conservatory

2:30pm

Art workshop with
artist Amy
Conservatory



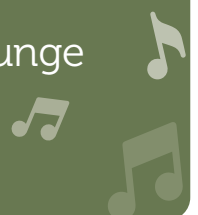
THURSDAY 14TH

10:30/11:00am

Day trip to Noah's Ark/
Word games
Bristol/Conservatory

2:30/6:30pm

Desert Island Discs/
Poetry & nibbles
Conservatory/Front lounge



FRIDAY 15TH

10:30/11:30am

Day trip to Bristol
Botanical Gardens/
Keep fit

Bristol/Conservatory

2:30pm

Entertainment from
Dave Harris
Conservatory



SATURDAY 16TH

11:00am

Coffee morning &
Amazing True Stories
Conservatory

2:30/6:00pm

Entertainment from
Ian James/Movie
night
Conservatory/Front lounge

SUNDAY 17TH

2:30pm

Social engagements
Rooms

11:00am

Songs of Praise &
coffee
Front lounge



MONDAY 18TH

10:15/10:30/11:30am

Walking club/Day trip
to SS Great Britain/
Movement to music

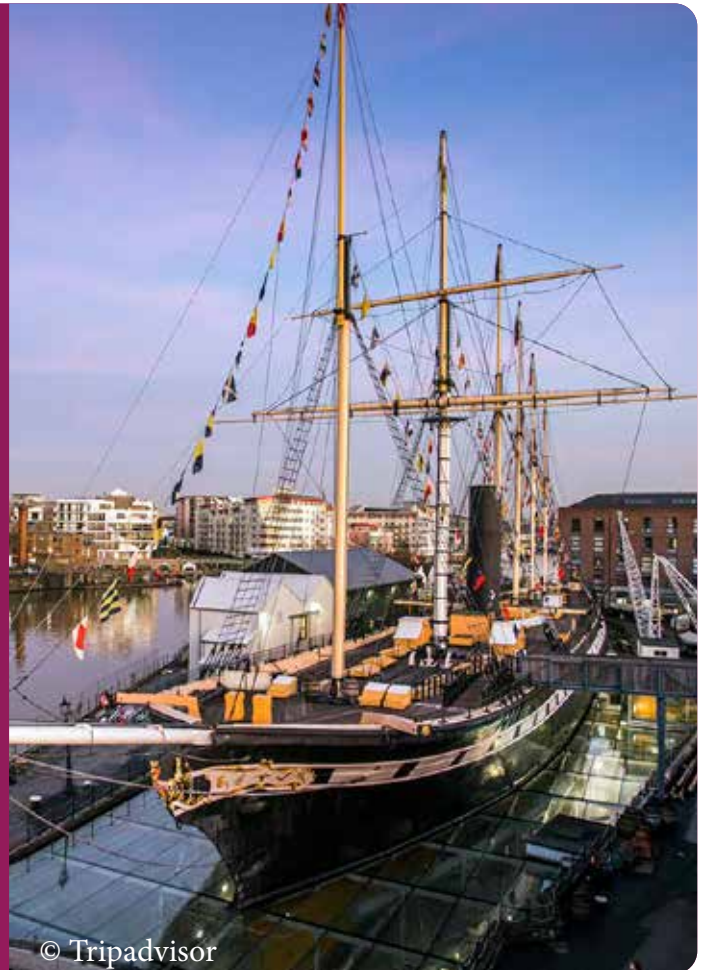
Local area/Bristol/
Conservatory

?

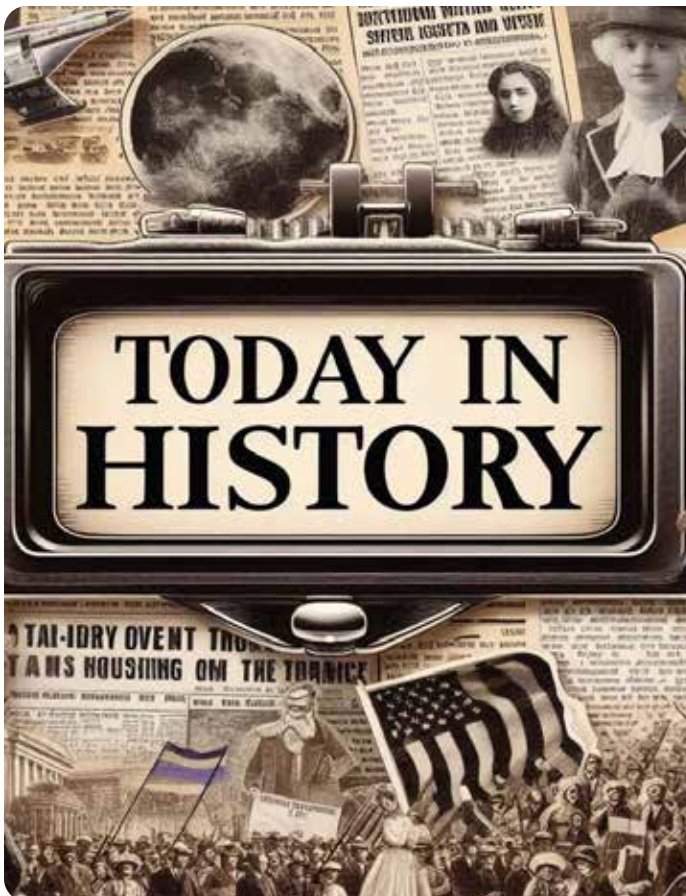
2:30pm

Floor quiz
Conservatory

?



© Tripadvisor



TUESDAY 19TH

11:00am

Coffee morning &
Today in History/
Knit & natter

Conservatory/Front lounge

2:30pm

Card & board games
Conservatory

WEDNESDAY 20TH

9:30/11:00am

Shop & chat with Jay/
Juice bar
Conservatory

2:30pm

Pamper session
Conservatory



THURSDAY 21ST

10:30/11:00am

Day trip to Warmley
Wheelers/Bristol
sights bingo
Warmley/Conservatory

2:30/6:30pm

Churches Together
service/Seasonal
food presentation &
tasting
Conservatory/Front lounge



FRIDAY 22ND

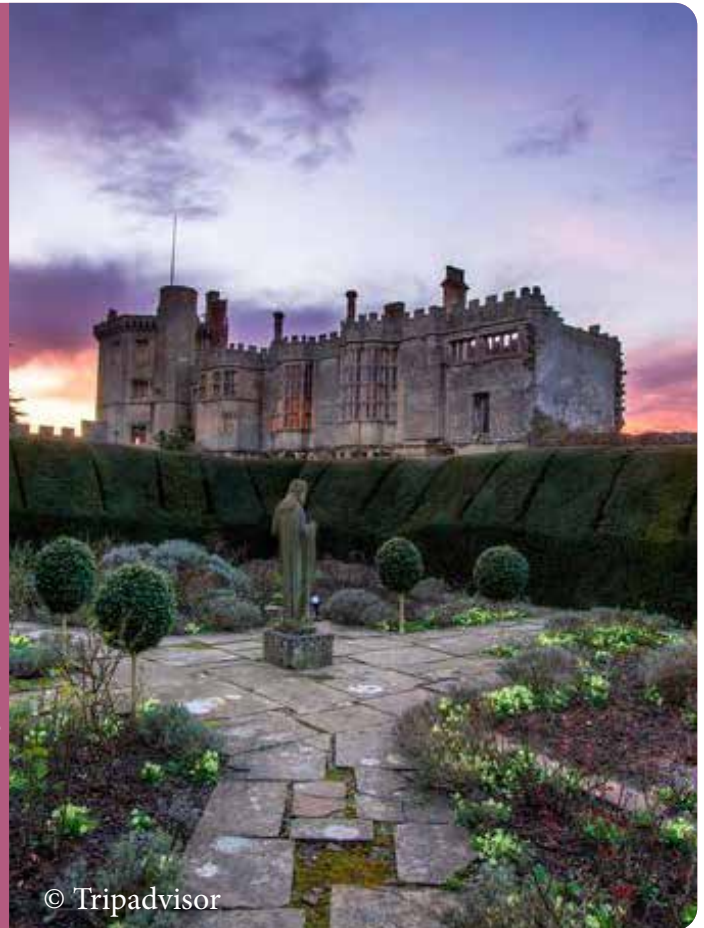
10:15/10:30/11:30am

**Walking club/Day trip
to Thornbury Castle/
Morning stretch**

Local area/Thornbury/
Conservatory

2:30pm

**Entertainment from
Umbrella Music**
Conservatory



SATURDAY 23RD

11:00am

**Coffee morning &
Today in History**
Conservatory



2:30/6:00pm

**One to one social
engagements &
surveys/Movie night**
Rooms/Front lounge

SUNDAY 24TH

11:00am

Carer led activites
Around the home

2:30pm

Carer led activities
Around the home



MONDAY 25TH

10:15/10:30/11:30am

Walking club/Holistic
massage with Tracey/
Keep fit

Local area/Around the home/
Conservatory

2:30pm

Carer led activities

Around the home



TUESDAY 26TH

11:00am

Coffee morning/
Lullaby Circle -
mother and baby
group

Conservatory/Front lounge

2:30pm

Residents' meeting

Conservatory



WEDNESDAY 27TH

11.00am

Ascot Day

Conservatory

2.30pm

Ascot Day

Conservatory



THURSDAY 28TH

10:30/11:00am

Day trip to Wye
Valley Butterfly Farm/
Gardening club
Wye Valley/Garden

2:30/6:30

Entertainment with
guitarist Damien/
Skittles & boules
Conservatory/Front lounge



FRIDAY 29TH

10:15/10:30/11:30am

Walking club/Day
trip to Old Tintern
Station/Morning
exercise

Local area/Tintern/
Conservatory

2:30pm

Video quiz
Front lounge



SATURDAY 30TH

11:00am

Coffee morning
Conservatory

2:30pm

Garden time
Conservatory



SUNDAY 31ST

11:00am

Songs of Praise &
coffee

Front lounge

2:30pm

Social engagements
Rooms



Activity Suggestion Slip

If you have any ideas for new activities we could offer, please write them below and post the slip in the suggestions box.



A large white rounded rectangle containing ten horizontal lines for writing suggestions.