

# Activities CALENDAR



Glebe House

[bristolcarehomes.co.uk](http://bristolcarehomes.co.uk)



WEDNESDAY 1<sup>ST</sup>

Day trip to Bristol  
Airport with fish &  
chips

TUESDAY 14<sup>TH</sup>

Day trip to Willow  
Trust boat ride with  
Quarry House

FRIDAY 24<sup>TH</sup>

Lullaby Circle -  
Mother and baby  
group

Hello,

dear friend!

## Welcome to our April Springtime Calendar.

By now the clocks have moved forward, bringing brighter mornings and longer, lighter evenings. Spring is well underway, and with it comes the sweet sound of birds singing and the cheerful sight of daffodils in bloom. It truly is a lovely time of year.

You may even be opening this booklet on April Fools' Day on the 1st of April—so keep your wits about you in case someone is planning a playful joke... or perhaps you're the one planning the mischief!

This month we also celebrate Easter, which will be reflected in some of the activities we have planned, all inspired by your suggestions and interests.

Later in the month we'll mark St George's Day on the 23rd of April, celebrating Britain and all that makes this country so special.

With the improving weather, our day trips will become more varied, giving us plenty of opportunities to get outdoors and enjoy the fresh spring air. Where would you like to visit this month? Be sure to let a member of staff know so we can happily arrange it for you.

*We wish you a lovely month ahead!*



## Meet the team

*Kayleigh* - Mini Bus Carer

Hello !

I've been part of the Bristol Care Homes family for a year now. Before joining Glebe House, I spent seven years working as an Ambulance Care Assistant, so caring for others has always been a huge part of who I am.

I originally joined Glebe House as a minibus carer, and along the way I've also become involved in supporting day trips for residents at Beech House. I absolutely love taking residents out into the local area – whether it's a quick shopping trip for essentials or discovering somewhere completely new together. These outings give me the chance to really get to know each resident on a personal level, and it means a lot to see the difference these experiences make to their wellbeing and sense of independence.

Outside of work, I'm a single mum to my lovely seven-year-old daughter,

Lexi-Lou. We live together in Bedminster Down, and our favourite things are snuggling up with a good film, taking seaside trips, and getting out to the park whenever the weather behaves.

I also carry a little daily reminder on my hand – a tattoo that reads "Let them." It holds a deeply personal meaning for me and helps guide me towards emotional peace each day.

Looking ahead, I'm keen to continue growing within Bristol Care Homes. I'm always open to new opportunities, new experiences, and any door that might open for me. I'm excited to see where this journey takes me.

## WEDNESDAY 1<sup>ST</sup>

11:00am

### Day trip to Bristol Airport with fish & chips/Hair & nails Salon

Salon

2:30pm

### G-fitness with Alex

Main lounge



© Tripadvisor



## THURSDAY 2<sup>ND</sup>

11:00am

### Coffee at The Bowl Inn

Almondsbury

2:30pm

### Entertainment with musician Andy T

Main lounge

FRIDAY 3<sup>RD</sup>

11:00am

## Residents' meeting over coffee

Main lounge

2:30pm

## Entertainment with violinist Laurence

Main lounge



SATURDAY 4<sup>TH</sup>

11:00am

## Residents' meeting

Rooms

2:30pm

## Open house activities with Liz

Main lounge



## SUNDAY 5<sup>TH</sup>

11:00am

### Foot spa

Orchard lounge

---

2:30pm

### Church service with Jan & Sarah

Main lounge

## MONDAY 6<sup>TH</sup>

11:00am

### Walking club

Almondsbury

---

2:00pm

### Movie afternoon - Easter Parade

Main lounge



## TUESDAY 7<sup>TH</sup>

11:00am

### Day trip to The Vassall Centre for lunch with Quarry House/Arts & crafts

Bristol/Activities room

---

2:30pm

### Entertainment with Katie from Bristol Umbrella

Main lounge



WEDNESDAY 8<sup>TH</sup>

11:00am

**Day trip to The Swan Inn/Hair & nails**

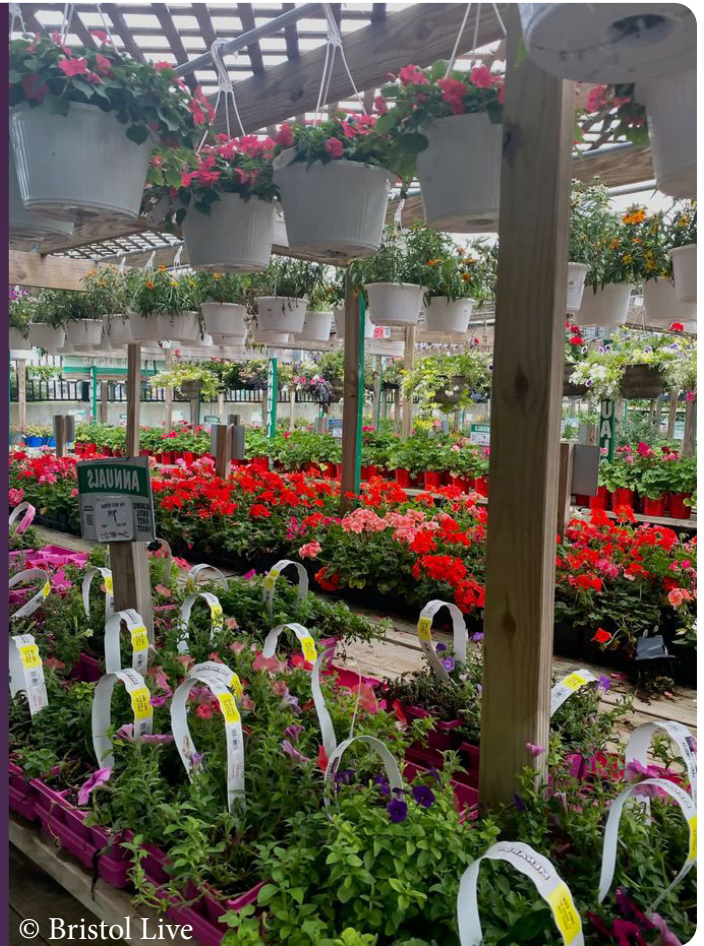
Thornbury/Salon

---

2:00pm

**Day trip to Almondsbury Garden Centre/Singing for the Brain**

Almondsbury/Main Lounge



© Bristol Live

THURSDAY 9<sup>TH</sup>

11:00am

**Coffee at The Bowl Inn**

Almondsbury

---

2:30pm

**Making sweet pizzas**

Dining room



© Tripadvisor

## FRIDAY 10<sup>TH</sup>

11:00am

### Coffee morning

Main lounge

---

2:00pm

### Movie afternoon

Main lounge



## SATURDAY 11<sup>TH</sup>

11:00am

### Social engagements with Liz

Rooms

---

2:30pm

### Open house activities with Liz

Activities room

## SUNDAY 12<sup>TH</sup>

10:30am

### Church service live-stream

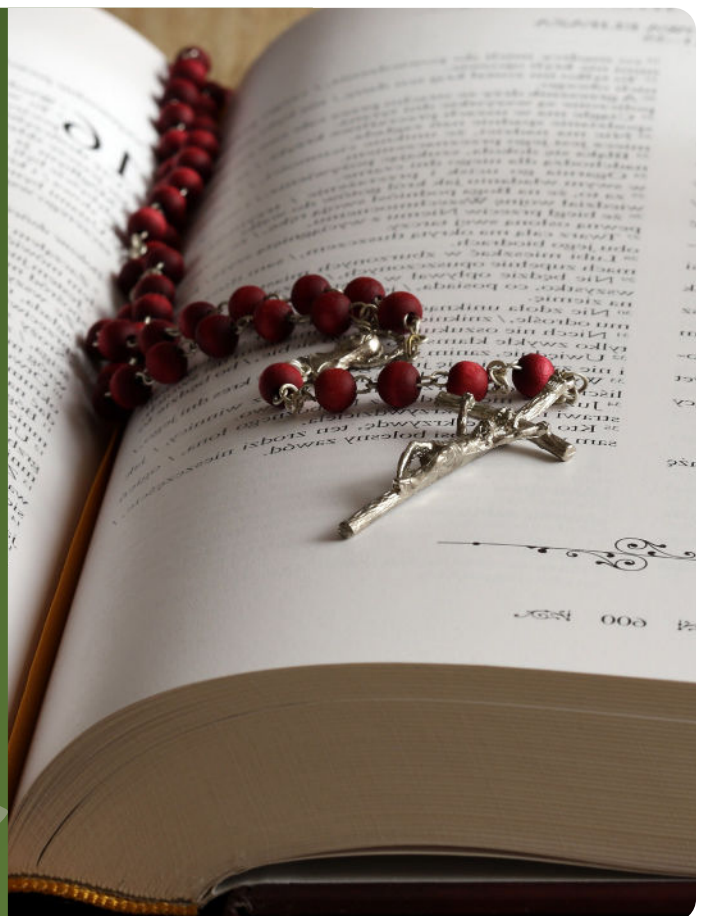
Main lounge

---

2:30pm

### Open house activities with Liz

Main lounge



MONDAY 13<sup>TH</sup>

11:00am

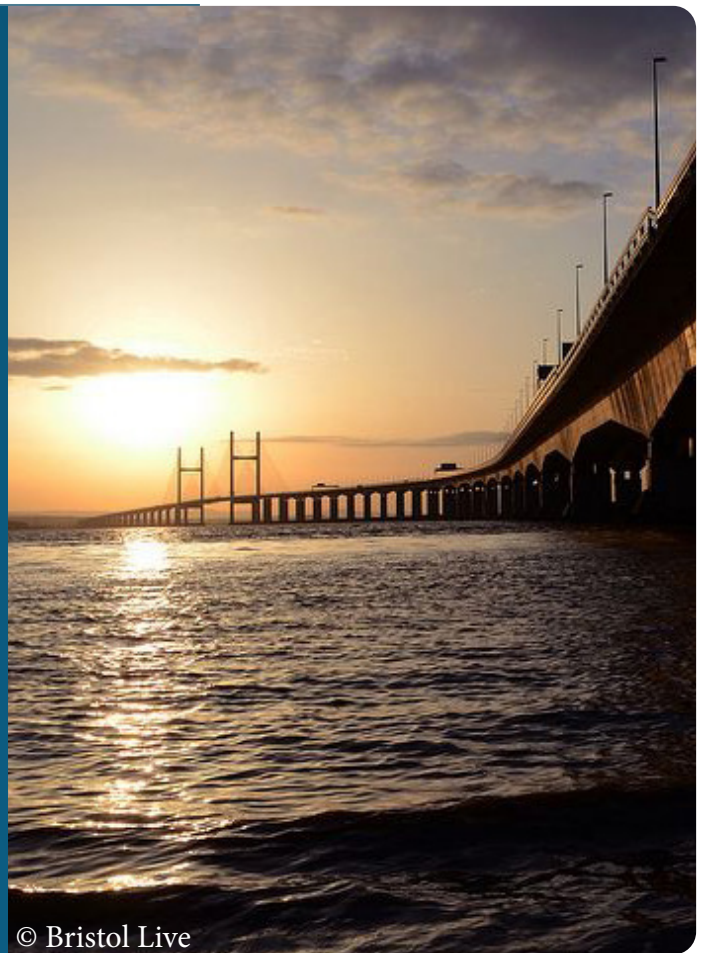
**Day trip to Severn  
Beach/Walking Club**

Severn Beach/Almondsbury

2:30pm

**Day trip to The Wave/  
Knit & Natter with  
Bev**

Easter Compton/Main Lounge



© Bristol Live



TUESDAY 14<sup>TH</sup>

8:30am

**Day trip to Willow  
Trust boat ride with  
Quarry House**

Frampton on Severn



## WEDNESDAY 15<sup>TH</sup>

11:00am

**Day trip to  
Thornbury Castle/  
Thero band class  
with Physio Zion**

Thornbury/Main Lounge

2:30pm

**Day trip to West  
Country Water Park/  
Entertainment with  
singer Danielle**

Main lounge



## THURSDAY 16<sup>TH</sup>

11:00am

**Coffee at the Bowl  
Inn**

Almondsbury

2:30pm

**Entertainment with  
guitarist Johnny**

Main lounge



## FRIDAY 17<sup>TH</sup>

11:00am

### Coffee morning

Orchard lounge

---

2:30pm

### Movie afternoon

Activities room



## SATURDAY 18<sup>TH</sup>

11:00am

### Social engagements with Liz

Rooms

---

2:30pm

### Open house activities with Liz

Main lounge



## SUNDAY 19<sup>TH</sup>

11:00am

### Fun exercise

Orchard lounge

---

2:30pm

### Church service with Allister & Julie

Main lounge

## MONDAY 20<sup>TH</sup>

11:00am

### Walking club

Almondsbury

---

2:30pm

### Gardening fun

Glebe House gardens



## TUESDAY 21<sup>ST</sup>

11:00am

### Day trip to Tenpin bowling with Quarry House/Social engagement

Cribbs Causeway/Rooms

---

2:30pm

### Together Time at the Toddler Group

St. Mary's Church



WEDNESDAY 22<sup>ND</sup>

11:00am

**Day Trip to Thornbury  
Museum/Trampoline  
exercise class with  
Physio Zion**

Thornbury/Orchard Lounge

2:30pm

**Day trip to Bradley  
Stoke library/Snakes  
& ladders**

Bradley Stoke/Orchard



THURSDAY 23<sup>RD</sup>

11:00am

**Coffee at The  
Bowl Inn**

Almondsbury

2:30pm

**Our World in  
Pictures with Claire**

Main lounge



## FRIDAY 24<sup>TH</sup>

11:00am

### Lullaby Circle - Mother and baby group

Main lounge

---

2:30pm

### Entertainment with Lauren from Flourish Dance

Main lounge



## SATURDAY 25<sup>TH</sup>

11:00am

### Social engagements with Liz

Rooms

---

2:30pm

### Open house activities with Liz

Main lounge

## SUNDAY 26<sup>TH</sup>

11:00am

### Social therapy

Orchard lounge

---

2:30pm

### Movie afternoon - Planet Earth Documentary

Main lounge



## MONDAY 27<sup>TH</sup>

11:00am

### Day trip for Ice skating at Planet Ice/Walking club

Main lounge/Almondsbury

---

2:30pm

### Art workshop with artist Amy

Dining room



## TUESDAY 28<sup>TH</sup>

11:00am

### Day trip to Willow Brook Shopping Centre/Mini concert with Tockington Manor School children

Bradley Stoke/Main lounge

---

2:30pm

### Quiz fun with Bev

Main lounge



## WEDNESDAY 29<sup>TH</sup>

11:00am

### Day trip to Thornbury shops/ Hair & nails

Thornbury/Salon

---

2:30pm

### Day trip to Almondsbury Garden Centre/Thinking Music with Phil

Main lounge



THURSDAY 30<sup>TH</sup>

11:00am

## Open house activities

Main lounge

2:00pm

## 30th Anniversary Celebrations of Glebe House

Main lounge



## Activity suggestion slip

If you have any ideas for **new activities** we could offer, please write them below and post the slip in the suggestions box.



A large white rectangular area with rounded corners, containing seven horizontal lines for writing suggestions.