

Activities CALENDAR



Field House

bristolcarehomes.co.uk



FRIDAY 6TH

Day trip to
Almondsbury Garden
Centre

MONDAY 9TH

Design-a-Biscuit
(Valentine Special)

THURSDAY 26TH

Creature Cuddles



Hello,
dear friend!

Welcome to our February Activities Calendar!

We hope the year has started well for you! February is a month that truly celebrates love, warmth, and togetherness—with Valentine's Day just around the corner. It's a wonderful opportunity to remind ourselves of the importance of connection, whether with family, friends, or within our community.

But Valentine's Day isn't the only highlight! We're also excited to embrace other special occasions such as Pancake Day and Chinese New Year, which bring their own unique traditions and flavours. These celebrations have been thoughtfully woven into this month's activities, ensuring that there's something for everyone to enjoy—whether it's indulging in delicious pancakes, learning about cultural customs, or simply sharing joyful moments with others.

Across our homes, many residents have been sharing their hopes and wishes for the year ahead. It's inspiring to hear their aspirations, and it makes us wonder—have you taken a moment to think about one thing you'd like to achieve this year? Whether it's a personal goal, a new hobby, or simply spending more time with loved ones, we're here to support you every step of the way.

And don't forget the exciting day trips planned for this month! These outings have been inspired by residents' suggestions and are designed to create memorable experiences out in the community. From scenic walks to cultural visits, we hope these trips bring plenty of laughter, joy, and cherished moments for everyone involved.

**Wishing you a wonderful month filled with
laughter, connection, and memorable moments!**



Meet the team

Christy - Nurse

Hello !

I was born and educated in India, where I completed my nursing qualification and began my career working in several hospitals. Later, I had the incredible opportunity to serve in the palace medical team for the royal family in Oman. Eventually, I moved to the UK through an agency, hoping to work in a hospital.

Although that didn't happen at first, I found my true calling at Field House—and I've never looked back. I've been a nurse for over 22 years and feel truly blessed with two wonderful sons who are now settled in their lives. My decision to join Field House was inspired by my children's education, my professional aspirations, and my dream of continuing in healthcare.

One defining moment changed everything for me: I met a gentleman with Parkinson's who struggled with the simplest tasks. That day, I realised that caring for residents in care homes is my real calling. It opened my eyes,

and from then on, I dedicated myself to supporting residents and bringing smiles to their faces.

Every day, I care for our residents and assist my colleagues, ensuring everyone's wellbeing. The most rewarding part is building relationships with residents and mentoring students during their training.

My main hobby is attending church and spending time in prayer—without God, there is nothing. I also enjoy cooking, gardening, and reading in my spare time.

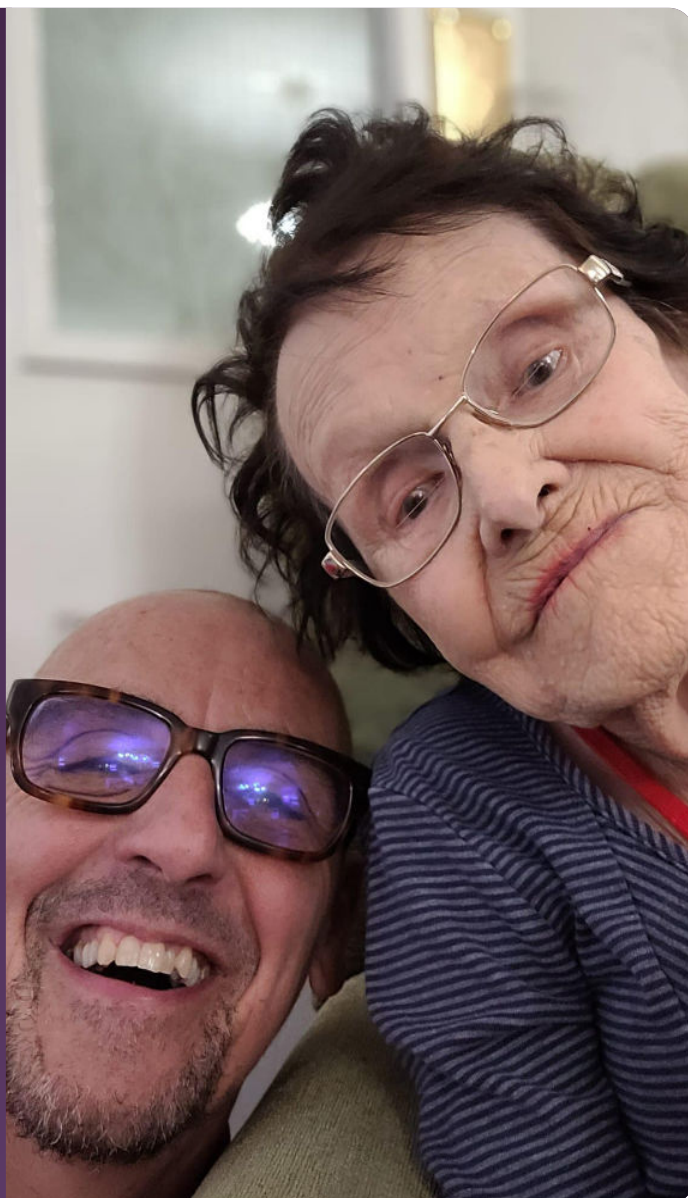
Bristol Care Homes feels like family. The team is genuine, generous, and always supportive—whether it's training opportunities or appreciating your work. I've had offers from many hospitals, but my heart never wanted to leave this place. Even during challenging times, the management stood by me, and that means everything.

SUNDAY 1ST

11:00am

Day trip with Jeremy

Resident's choice



MONDAY 2ND

10:30am

Holistic massage therapy with Tracey

Rooms

2:00pm

G-fitness with Gabby

Lounge



TUESDAY 3RD

10:30am

Residents' meeting
Rooms

2:00pm

Residents' meeting group
Dining Room



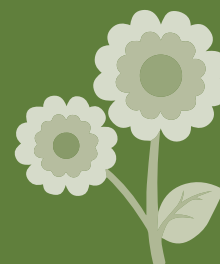
WEDNESDAY 4TH

11:00am

Day trip to Local cafe
Horfield

2:00pm

Walking Pals
Courtyard garden



THURSDAY 5TH

11:00am

**Entertainment with
guitarist Damien**
Rooms

2:00pm

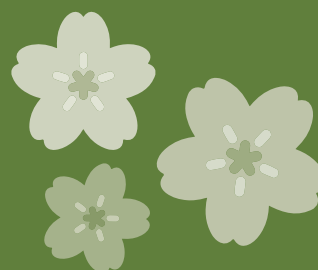
Social Interactions
Rooms



FRIDAY 6TH

11:00am

**Day trip to
Almondsbury Garden
Centre**
Almondsbury



© Tripadvisor

SATURDAY 7TH

11:00am

Shop Trolley on wheels

Rooms

2:00pm

Entertainment with Band - The Berlingo's Lounge



MONDAY 9TH

11:00am

Bedside entertainment with flautist Oli

Rooms

2:00pm

Design-a-Biscuit (Valentine Special)

Dinning room



TUESDAY 10TH

10:30am

Social Interactions
Rooms

2:00pm

**Entertainment with
guitarist Damien**
Lounge



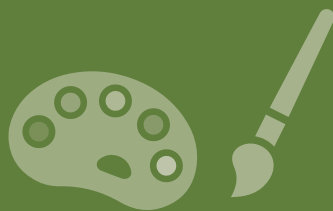
WEDNESDAY 11TH

11:00am

Day trip to Local Cafe
Horfield

2:00pm

**Art session with artist
Amy**
Lounge





THURSDAY 12TH

10:30am

**Bedside
Entertainment with
violinist Lawrence**
Rooms

2:00pm

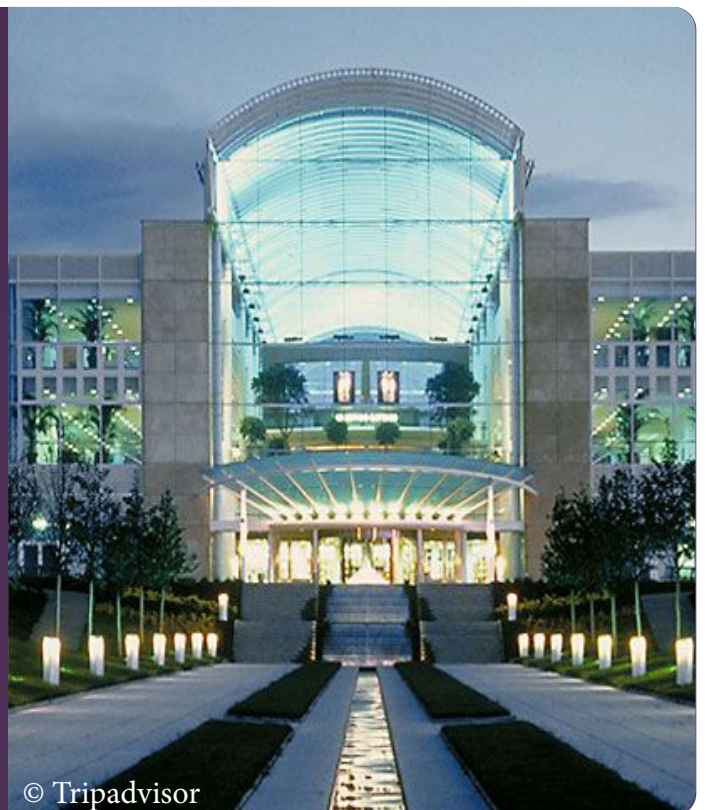
**Memory lane with
magician Steve**
Lounge



FRIDAY 13TH

11:00am

Day trip to The Mall
Cribbs Causeway



© Tripadvisor

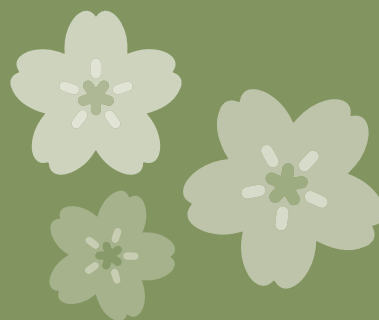


SUNDAY 15TH

11:00am

Day trip with Jeremy

Resident's choice



MONDAY 16TH

10:30am

Social Engagement - Five Things About Me

Rooms

2:00pm

Entertainment with singer Phil Medlow

Lounge





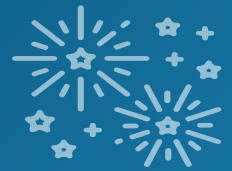
TUESDAY 17TH

11:00am

**Lullaby circle -
Mother and baby
group**
Lounge

2:00pm

**Design-a-Card for Eid
Celebrations**
Dinning room



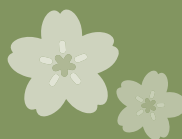
WEDNESDAY 18TH

11:00am

**Day trip to Local
shops**
Filton

2:00pm

**Oomph-on-demand
Quiz**
Lounge



THURSDAY 19TH

10:30am

Social Interactions

Rooms

2:00pm

Movement & Exercise with Tracey

Lounge



FRIDAY 20TH

11:00am

Day trip for Tenpin bowling

Cribbs Causeway



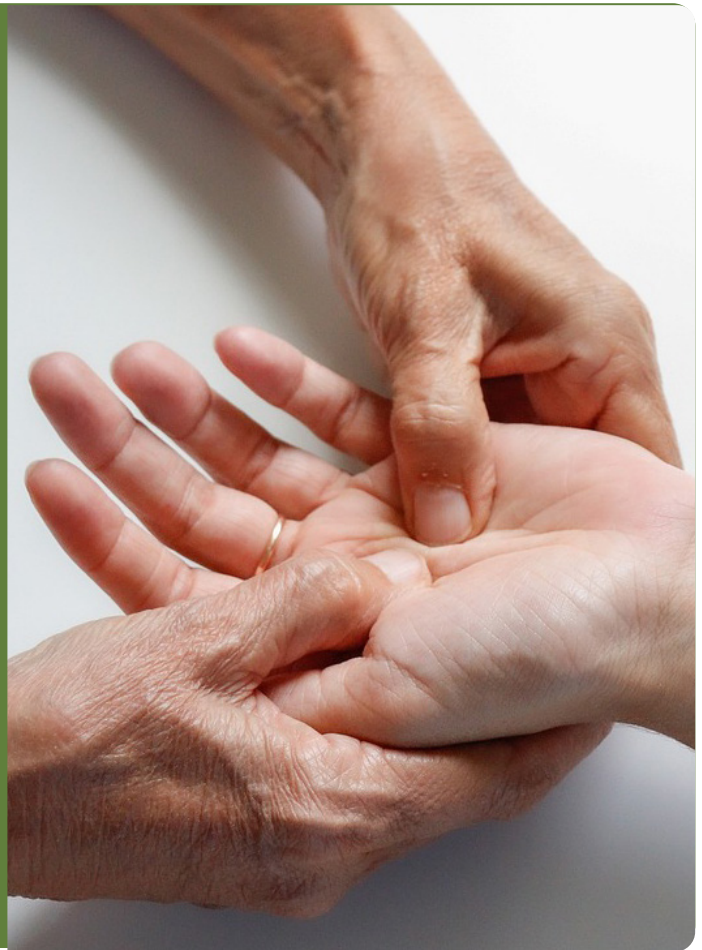
SATURDAY 21ST

11:00am

**Holistic massage
therapy with Tracey**
Rooms

2:00pm

**Entertainment with
singer Chris**
Lounge



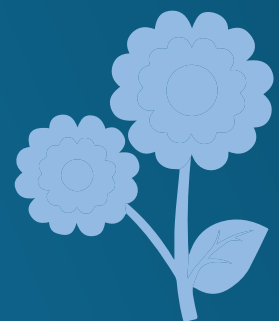
MONDAY 23RD

10:30am

Residents' Surveys
Rooms

2:00pm

Bingo Fun
Dinning room





TUESDAY 24TH

10:30am

**Holistic massage
therapy with Tracey**
Rooms

2:00pm

**Social engagement
with coffee**
Lounge



WEDNESDAY 25TH

11:00am

**Day trip to Ardagh
Community Cafe**
Horfield

2.00pm

Well-being visits
Rooms



THURSDAY 26TH

10:30am

Social Interactions
Rooms

2:00pm

Creature Cuddles
Lounge



FRIDAY 27TH

11:00am

Day trip to Local pub
Horfield





This image shows a single sheet of white paper with horizontal ruling lines. The lines are evenly spaced and run across the width of the page. There are no margins, text, or other markings on the paper.