

Activities CALENDAR



Beech House

bristolcarehomes.co.uk



THURSDAY 5TH

Day trip to Wye
Valley Butterfly Farm

SATURDAY 14TH

Coffee morning with
Valentine's messages

THURSDAY 26TH

Memory Lane with
magician Steve



Hello,
dear friend!

Welcome to our February Activities Calendar!

We hope the year has started well for you! February is a month that truly celebrates love, warmth, and togetherness—with Valentine's Day just around the corner. It's a wonderful opportunity to remind ourselves of the importance of connection, whether with family, friends, or within our community.

But Valentine's Day isn't the only highlight! We're also excited to embrace other special occasions such as Pancake Day and Chinese New Year, which bring their own unique traditions and flavours. These celebrations have been thoughtfully woven into this month's activities, ensuring that there's something for everyone to enjoy—whether it's indulging in delicious pancakes, learning about cultural customs, or simply sharing joyful moments with others.

Across our homes, many residents have been sharing their hopes and wishes for the year ahead. It's inspiring to hear their aspirations, and it makes us wonder—have you taken a moment to think about one thing you'd like to achieve this year? Whether it's a personal goal, a new hobby, or simply spending more time with loved ones, we're here to support you every step of the way.

And don't forget the exciting day trips planned for this month! These outings have been inspired by residents' suggestions and are designed to create memorable experiences out in the community. From scenic walks to cultural visits, we hope these trips bring plenty of laughter, joy, and cherished moments for everyone involved.

Wishing you a wonderful month filled with laughter, connection, and memorable moments!



Meet the team

Amanda - Senior Carer

Hello !

I began my journey in care with this role, and I can honestly say it's the one I truly love. Before joining the care sector, I worked in a variety of jobs including delivery, administration, and catering. None of them gave me the sense of purpose I've found here.

I'm a proud mum of two teenage daughters – my eldest is currently doing an apprenticeship, and my youngest is in secondary school. In 2023, I faced redundancy, and it was actually my partner who suggested a career change. I decided to take the leap, applied for a role in care, and haven't looked back since.

Every day, I look after our residents and do my best to make them smile. Spending time with them is the highlight of my day – many of them

feel like family now. Knowing I can make someone's day brighter makes mine even better.

Outside of work, I enjoy running, fishing, and exploring the outdoors. I'm passionate about wildlife and birdwatching, and I love to unwind with a good book. These hobbies keep me grounded and connected to nature.

For me, the most rewarding part of this job is the opportunity to help people feel safe, cared for, and valued. That sense of making a real difference is priceless.

The management team here is fantastic, and my colleagues are some of the loveliest people I've ever worked with. There are plenty of opportunities for progression, and I've never felt so welcomed in any job throughout my 20-year career.

SUNDAY 1ST

11:00am

Church service live-stream with coffee

Front lounge

2:00pm

Movie afternoon

Front lounge



MONDAY 2ND

10:15am/11:30am

Walking club/Fun fitness

Local area/Conservatory

2:30pm

Entertainment with singer Shannon

Conservatory



TUESDAY 3RD

11:00am

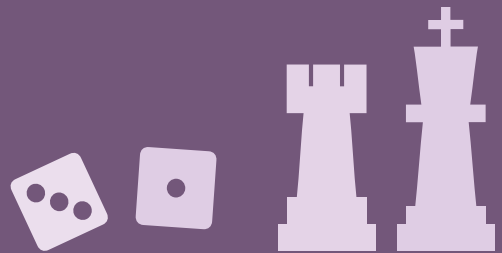
Coffee morning with Celebrity lucky dip

Conservatory

2:30pm

Word games

Conservatory



WEDNESDAY 4TH

10:00am/11:30am

Social engagements with Louisa/Keep fit

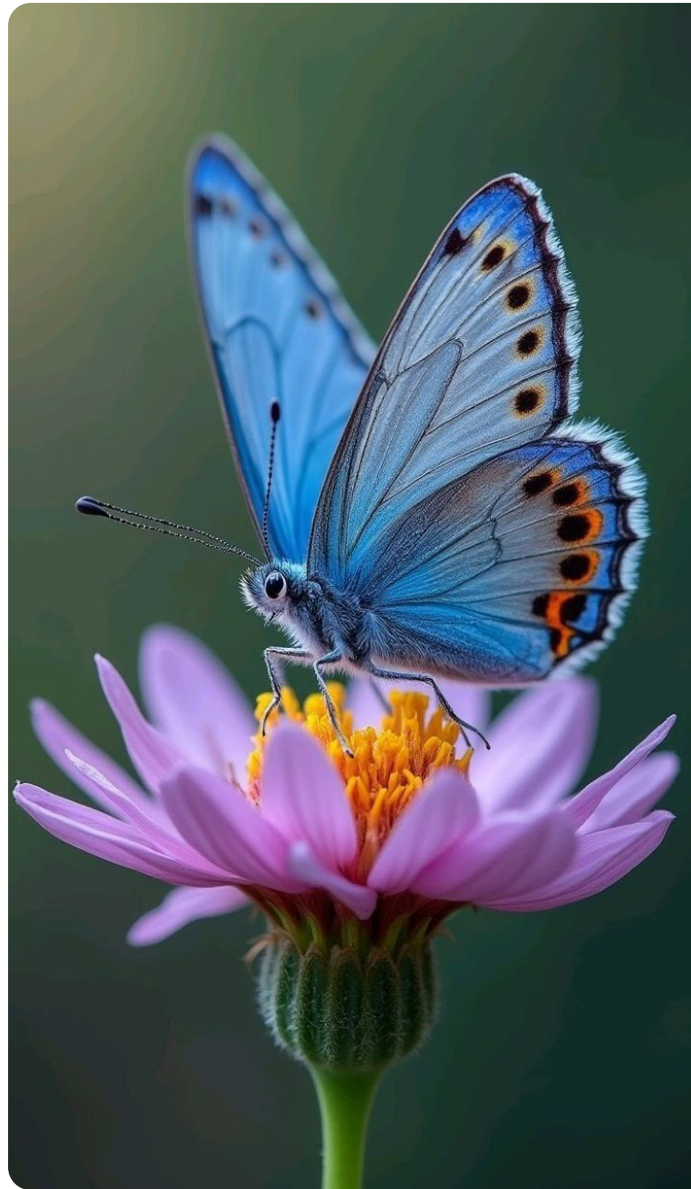
Rooms/Conservatory

12:30pm/2:30pm

Indoor picnic/Name That Tune

Conservatory





THURSDAY 5TH

10:30am/11:00am

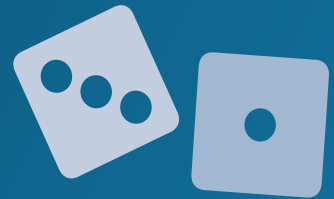
Day trip to Wye Valley Butterfly Farm/ Coffee & cookies

Symonds Yat/Conservatory

2:30pm

Giant snakes & ladders

Conservatory



FRIDAY 6TH

10:15am/10:30am/11:30am

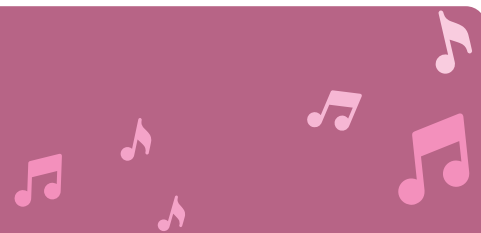
Walking club/Day trip to Almondsbury Garden Centre/Body fit

Local area/Almondsbury/ Conservatory

2:00pm

Entertainment with guitarist & singer Justin

Conservatory





SATURDAY 7TH

11:00am

**Coffee morning with
Amazing true stories**
Conservatory

2:30pm/6:00pm

**Music from Mini
Concerts/Movie
night**

Conservatory/Front lounge



SUNDAY 8TH

11:00am

**Songs of Praise with
coffee**

Front lounge

2:30pm

Social engagements

Rooms



MONDAY 9TH

9:30am/10:30am/11:00am

Shop & chat/Day trip to Winterstream Farm/Art workshop with Amy

Around the home/Bradley Stoke/Conservatory

2:30pm

Floor quiz

Conservatory



© Tripadvisor

TUESDAY 10TH

11:00am

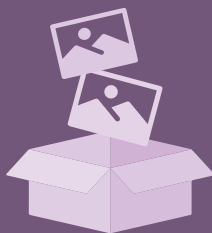
Coffee morning with Today in History

Conservatory

2:30pm

Our World in Pictures with Claire (famous Couples)

Front lounge



WEDNESDAY 11TH

11:00am

Variety session with Louisa

Conservatory

2:00pm/2:30pm

Variety session with Louisa/Entertainment with musician Dave Harris

Poplars/Conservatory



THURSDAY 12TH

10:30am/11:00am

Day trip to Frampton on Severn/Valentine's flower arranging

Frampton on Severn/
Conservatory

2:30pm/6:30pm

Word games/ Chocolate tasting with presentation

Conservatory/Front lounge

FRIDAY 13TH

10:00/10:15am/10:30/11:30am

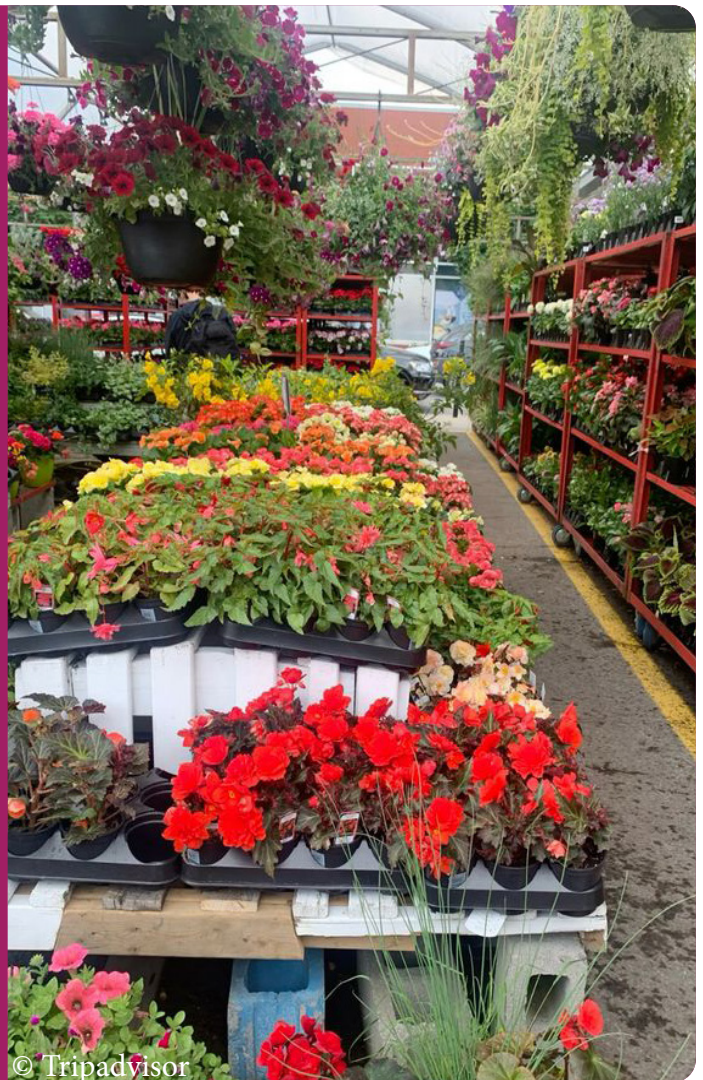
Social engagements with Louisa/Walking club/Day trip to Chepstow Garden Centre/Movement to music

Rooms/Local area/Chepstow/Conservatory

2:30pm

Entertainment with singer Rebecca

Conservatory



© Tripadvisor

SATURDAY 14TH

11:00am

Coffee morning with Valentine's messages

Conservatory

2:00am

The Saturday matinee

Front lounge



SUNDAY 15TH

11:00am

Church service live-stream with coffee

Front lounge

2:30pm

Social engagements

Rooms



MONDAY 16TH

10:15am/11:30am

Walking club/Morning exercise

Local area/Conservatory

2:30pm

Entertainment with guitarist and singer Johnny

Conservatory



TUESDAY 17TH

11:00am

Coffee morning with Pancake Day facts

Conservatory

2:30pm

Pancake making & flipping

Conservatory

WEDNESDAY 18TH

11:30am

Body fit

Conservatory

16

54

2:30pm

Bingo Fun

Conservatory

22

03

THURSDAY 19TH

10:30am/11:00am

Day trip to Bristol Aquarium/ Gardening club

Bristol/Conservatory &
garden



2:30pm/6:30pm

Churches

Together & hymns/ Chinese New Year presentation

Conservatory/Front lounge



FRIDAY 20TH

10:30am/11:00am

Day trip to The Mall/ Armchair travel to China for Chinese New Year

Cribbs Causeway/Front lounge

2:30pm

Chinese culture afternoon

Conservatory



SATURDAY 21ST

11:00am

Coffee morning with singalong

Conservatory

2:30pm/6:00pm

Desert Island Discs/ Movie night

Conservatory/Front lounge



SUNDAY 22ND

11:00am

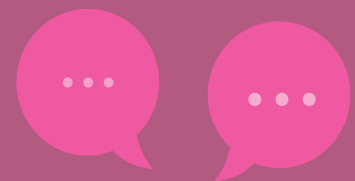
Songs of Praise with coffee

Front lounge

2:30pm

Social engagements

Rooms



MONDAY 23RD

9:30/10:15/10:30/11:30am

Shop & chat/Walking club/Holistic massage with Tracey/Day trip to The Windmill/Morning stretch

Around the home/Local area/Rooms/Portishead/Conservatory

2:30pm

Residents' meeting

Conservatory



© Bristol Live

TUESDAY 24TH

11:00am

Lullaby Circle - Mother and baby group

Front lounge

2:30pm

Entertainment with singer Josh

Conservatory



WEDNESDAY 25TH

11:00am

Variety session with Louisa

Conservatory

2:00pm/2:30pm

Variety session with Louisa/Reminiscence session

Poplars/Front lounge



© Tripadvisor

THURSDAY 26TH

10:30am/11:00am

Day trip to Bristol Museum/Word games

Bristol/Conservatory

2:30pm/6:30pm

Memory Lane with magician Steve/Skittles & boules

Conservatory/Front lounge

FRIDAY 27TH

10:00/10:15/10:30/11:30am

Social engagements with Louisa/Walking club/Day trip for tenpin bowling / Movement to music

Rooms/Local area/Cribbs Causeway/Conservatory

2:30pm

Floor quiz

Conservatory





SATURDAY 28TH

11:00am

Today in History over coffee

Conservatory

2:30pm/6:00pm

Picture quiz/Movie night

Front lounge



Activity suggestion slip

If you have any ideas for new activities we could offer, please write them below and post the slip in the suggestions box.