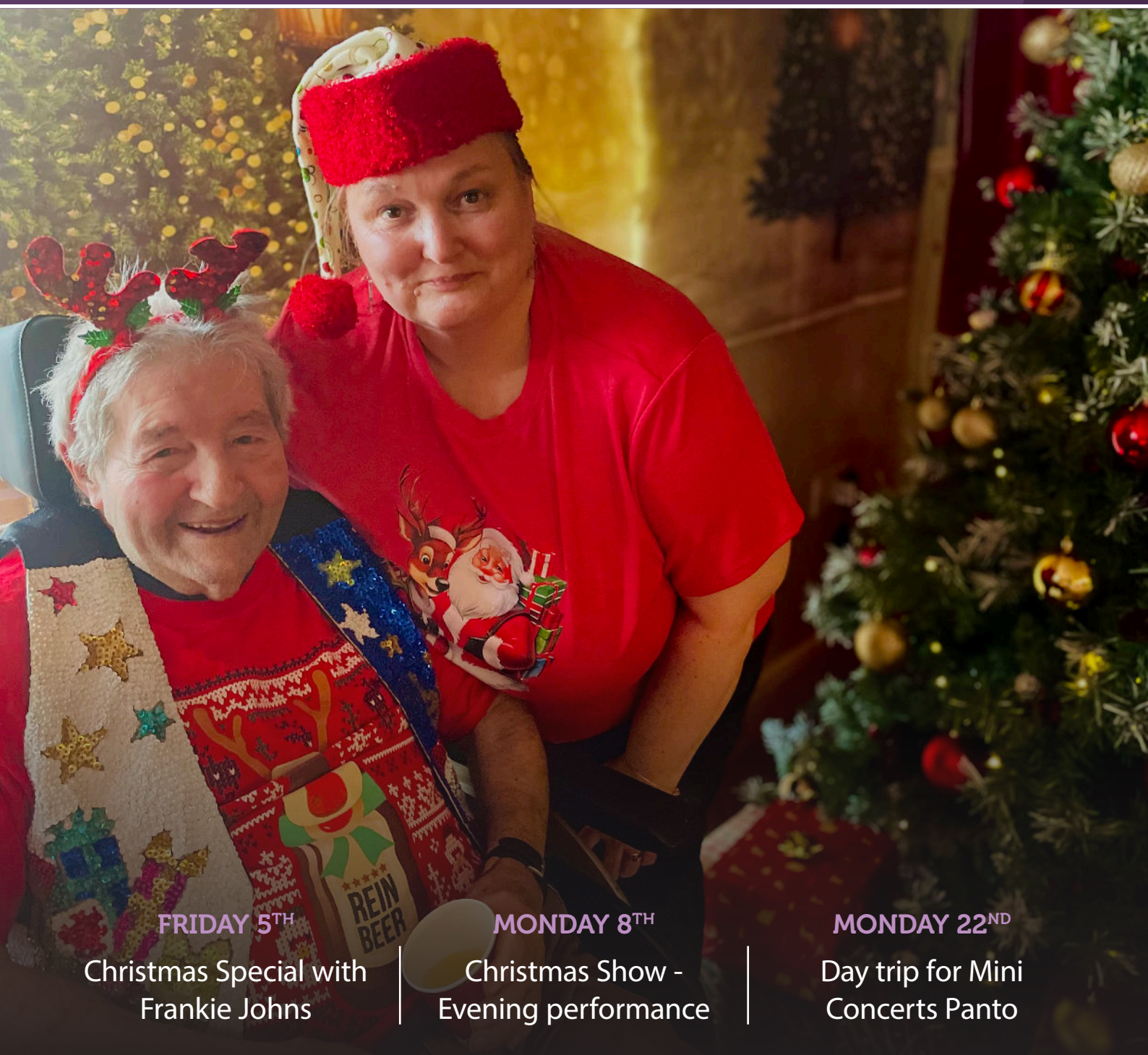


# Activities CALENDAR



Quarry House

[bristolcarehomes.co.uk](http://bristolcarehomes.co.uk)



**FRIDAY 5<sup>TH</sup>**

Christmas Special with  
Frankie Johns

**MONDAY 8<sup>TH</sup>**

Christmas Show -  
Evening performance

**MONDAY 22<sup>ND</sup>**

Day trip for Mini  
Concerts Panto





Hello,  
dear friend!

## **Welcome to our December edition!**

As winter settles in and the days grow colder, our hearts grow warmer with excitement for the joyful activities we have planned. This month is filled with something for everyone – from carol services, Christmas shows and seasonal entertainment to festive arts and crafts, day trips, mince pies, mulled wine, bedside entertainment, and special visits from children spreading Christmas cheer.

December is a special time to create and share cherished memories with your family, friends, and fellow residents.

"At Bristol Care Homes this Christmas tide,  
Joy and warmth flow far and wide;

With twinkling lights and hearts aglow,  
We send our love through winter's snow.

May peace and laughter softly creep,  
And blessings hold you warm and deep;

This festive season, bright and true,  
Brings cheer from us to all of you"

We would like to take this opportunity to wish all our wonderful residents, their families and friends, our amazing staff, and all visitors a very Merry Christmas and a Happy New Year.

**We look forward to spending a wonderful month with you all!**



# Meet the team

*Connie* - Team Leader

Hello !

I am a qualified nurse from the Philippines, where I gained extensive experience working across various departments within the healthcare sector. This exposure gave me valuable insight into the challenges and needs of patients, which inspired my passion for caring for others.

I moved to the United Kingdom in 2006 and have been part of Bristol Care Homes since 2016. In my current role as Team Leader, I am responsible for administering medication, carrying out minor dressings, and ensuring the overall well-being of our residents. I also support carers in their duties and work closely with nurses, particularly during new admissions, to ensure care plans are accurately developed and implemented. I take pride in assisting

my colleagues, wherever possible.

Outside of work, I am a proud mother of three children—my daughter lives in the United States, while my two sons are based here in the UK.

Family is incredibly important to me, and I cherish every moment spent with them. I truly enjoy working at Bristol Care Homes. I find great fulfilment in engaging with our residents and collaborating with a dedicated, compassionate team.

The supportive environment created by the management makes a real difference—I feel my voice is heard and valued. Their encouragement and understanding have been instrumental in my professional journey. In my spare time, I enjoy shopping and going on holiday. I am grateful to be part of such a caring and collaborative workplace.



## MONDAY 1<sup>ST</sup>

9:00am/11:00am

Meaningful moments/  
G-Fitness

Rooms/Garden lounge



2:00pm

Christmas nativity show  
with Louisa/Christmas  
show rehearsal

Rooms/Main lounge

## TUESDAY 2<sup>ND</sup>

10:30am/11:45am

Walking Pals/Day trip to  
The Vassall Centre

Floors/Vassall Centre

2:15pm/4:00pm/6:30pm

Christmas themed Arts &  
Crafts/Proverbs & Sayings/  
Well-being & Engagement

Main Lounge/Sky & Meadow/Rooms



© Tripadvisor

## WEDNESDAY 3<sup>RD</sup>

9:00am/10:30am

Personalised  
connections/Sensory  
seasonal decorations  
Rooms/Garden & Meadow

2:15pm

Christmas Reminiscence  
with Ken  
Main Lounge



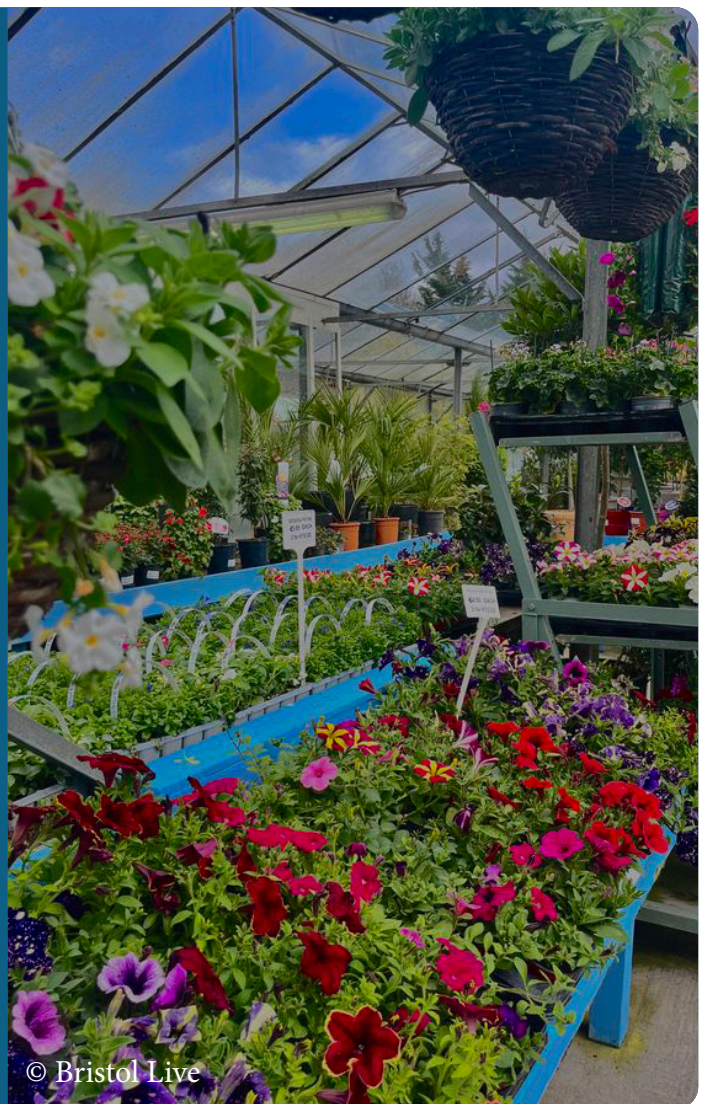
## THURSDAY 4<sup>TH</sup>

10:30am/10:45am

Sensory seasonal  
decorations/Day Trip to  
Laycock Garden Centre  
Ocean & Sky/Laycock

2:00pm

Bedside entertainment  
with guitarist Damien  
Rooms





## FRIDAY 5<sup>TH</sup>

9:00am/11:00am

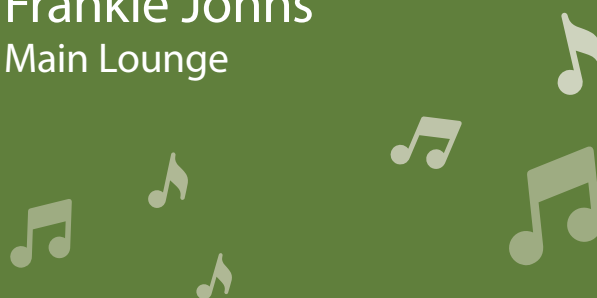
Bedside Christmas cheer/  
Visit from Bristol Met  
School children

Rooms

2:00pm

Christmas Special with  
Frankie Johns

Main Lounge



## SATURDAY 6<sup>TH</sup>

9:00am/10:30am

Wellbeing visits/  
Seasonal Arts & Crafts

Rooms/Garden Lounge

2:00pm

Entertainment with  
singer Rebecca

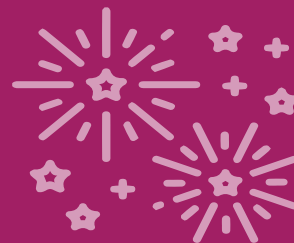
Main Lounge



## MONDAY 8<sup>TH</sup>

9:00am/10:30am

Christmas preparation/  
Coffee morning  
Rooms/Lounges



2:15pm/6:00pm

Entertainment with  
singer Shannon/  
Christmas Show -  
Evening performance  
Main lounge



## TUESDAY 9<sup>TH</sup>

10:45am/10:30am

Christmas Carol Service  
with St. Mary's Church/Day  
trip to the Scrap store  
Main lounge/St. Werburgh's

1:45pm/2:00pm/4:00pm/6:00pm

Short trip to Local  
Coffee Shop/Pet therapy  
with Melissa/Christmas  
memory box/Well-being &  
Engagement  
Downend/Rooms/Rooms/Rooms



## WEDNESDAY 10<sup>TH</sup>

9:00am/10:30am

Oomph on demand/  
Wreath Making  
Rooms/Lounges

1:45pm

Christmas Choir &  
Prayer Group  
Main Lounge



## THURSDAY 11<sup>TH</sup>

10:45am

Day trip to Christmas  
Market/Visit from St.  
Joseph's Nursery on  
Christmas Jumper Day  
Broadmead/Lounges

2:00pm

Our World in Pictures with  
Claire - Christmas Special  
Main lounge





## FRIDAY 12<sup>TH</sup>

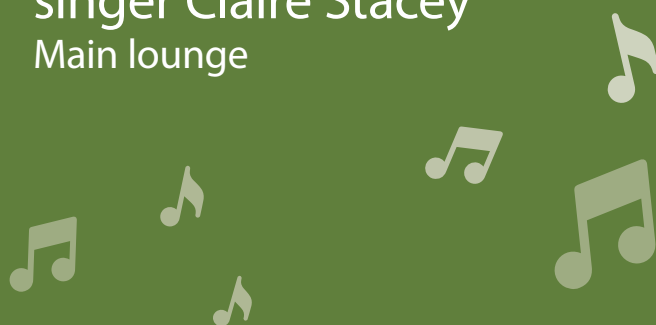
9:00am/10:30am

Christmas puzzle  
handouts/Visit from  
the Bristol Met School  
Children

All floors/Lounges

2:00pm

Entertainment with  
singer Claire Stacey  
Main lounge



## SATURDAY 13<sup>TH</sup>

9:00am/10:30am

Wellbeing visits/  
Christingle Making Fun  
Rooms/Ocean & Sky

2:00pm

Christingle Making Fun  
Garden & Meadow



## MONDAY 15<sup>TH</sup>

10:30am

Christmas Show  
Rehearsal  
Main lounge

2:00pm

Christmas Show  
Matinee  
Main lounge



## TUESDAY 16<sup>TH</sup>

10:30am/10:45am

Holistic therapy with  
Tracey/Day trip to St.  
Joseph's Nursey  
Rooms/Speedwell

1:45pm/2:00pm/6:00pm

Short trip to Morrisons  
for shopping/Memory  
lane with magician  
Steve/Wizard Of Oz  
Panto  
Fishponds/Main lounge/Main  
lounge



© Bristol Live



## WEDNESDAY 17<sup>TH</sup>

9:00am/10:30am

Christmas sensory box/  
Art workshop with artist  
Amy

Rooms/Main lounge

2:00pm

Christmas drinks trolley

Lounges/Rooms



## THURSDAY 18<sup>TH</sup>

10:30am/10:45am

Christmas carols &  
stories/Day trip to  
Tyntesfield House

Rooms/Tyntesfield

2:15pm

Entertainment with  
singers It Takes Two  
Main Lounge



© Tripadvisor

## FRIDAY 19<sup>TH</sup>

9:00am/10:30am

Personalised connection/  
Lullaby Circle - Mother  
and baby group  
Rooms/Main lounge

2:00pm

Festive Raffle & Mince  
Pies Delight  
Main lounge

## SATURDAY 20<sup>TH</sup>

9:00am

Final Christmas touches  
Lounges/Rooms

2:15pm

Christmas Special with  
singer Johnny Smith  
Main lounge



## MONDAY 22<sup>ND</sup>

10:30am

Staff Christmas  
Preparation  
Office

1:00pm/2:15pm

Day trip for Mini  
Concerts Panto/  
Christmas Special with  
singer Naomi  
Chipping Sodbury Town Hall/  
Main lounge







## TUESDAY 23<sup>RD</sup>

9:00am

Christmas present  
preparation  
Office

2:15pm

Residents' Christmas Party  
with singer Mike Nash  
Main lounge

## WEDNESDAY 24<sup>TH</sup>

9:00am/10:30am

Twas the night before  
Christmas/Oomph On  
Demand Christmas  
Special  
Rooms

1:30pm

Singing for the Brain -  
Christmas Special  
Main lounge

## THURSDAY 25<sup>TH</sup>

12:00pm

Christmas Lunch & Gifts  
Around the home

3:00pm

King Charles III Christmas  
message on BBC One  
Lounge



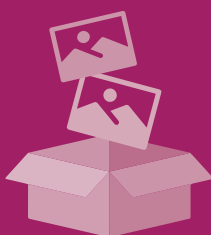
FRIDAY 26<sup>TH</sup>

9:00am/10:30am

Wellbeing visits/Boxing  
Day - Coffee Morning  
Rooms/Main lounge

2:00pm

Picture survey  
Lounges/Rooms



SATURDAY 27<sup>TH</sup>

9:30am

Residents' surveys  
Lounges/Rooms

2:15pm

2025 Quiz/reminisce  
Main lounge

?

?

?



## MONDAY 29<sup>TH</sup>

9:30am

New Years eve wishes  
& resolutions  
Lounges/Rooms

2:15pm

Entertainment by  
guitarist Johnny G  
Main lounge



© Tripadvisor

## TUESDAY 30<sup>TH</sup>

10:30am/10:45am

Short trip to Local Coffee  
Shop/Residents' Meeting  
- New Year activities  
planning  
Main lounge

2:45pm/2:00pm

Short trip to Local Shops/  
Picture surveys  
Lounges/Rooms





WEDNESDAY 31<sup>ST</sup>

9:00am/10:30am

Happy New Year wishes/  
Pamper sessions

All floors/Rooms

2:15pm

New Years Eve Party  
Main lounge



## Activity suggestion slip

?



If you have any ideas for new activities we could offer, please write them below and post the slip in the suggestions box.

---

---

---

---

---

---

---

---

---

---